

# *ARROContour*

Amanda Walker, MD

Stephanie Terezakis, MD

Johns Hopkins Hospital

# Standard Risk Medulloblastoma

- Treat craniospinal axis to 23.4 Gy in 13 fractions followed by tumor bed boost to 54 Gy in a total of 30 fractions

# Simulation

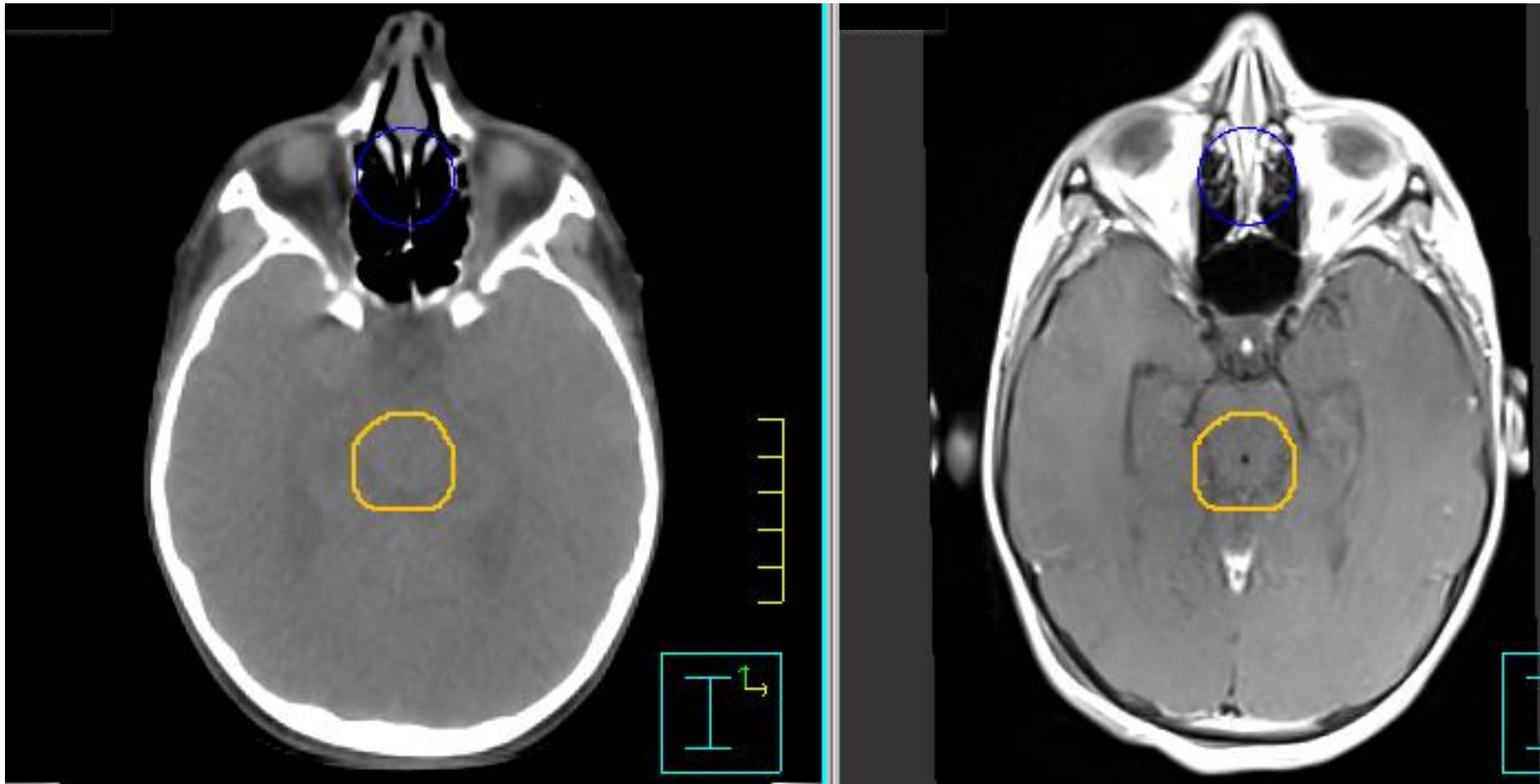
- CT simulation without contrast is performed. CT with contrast may be performed if MRI is not performed.
- MRI with contrast is obtained and fused to CT
- Remember: fusion is often imperfect

# Tumor Bed Boost

- GTV:
  - tumor bed + gross residual disease, including T1 signal abnormality with and without contrast
  - Surgical defects visible on MRI that did not contain disease on pre-op MRI are not included
- CTV:
  - GTV + 1 – 1.5 cm
  - excluding bone, tentorium, and entirety of brainstem (brain stem immediately adjacent to tumor bed should be included)
- PTV:
  - CTV + 3 – 5 mm

CT Sim

Post-op MRI (T1 post) fusion

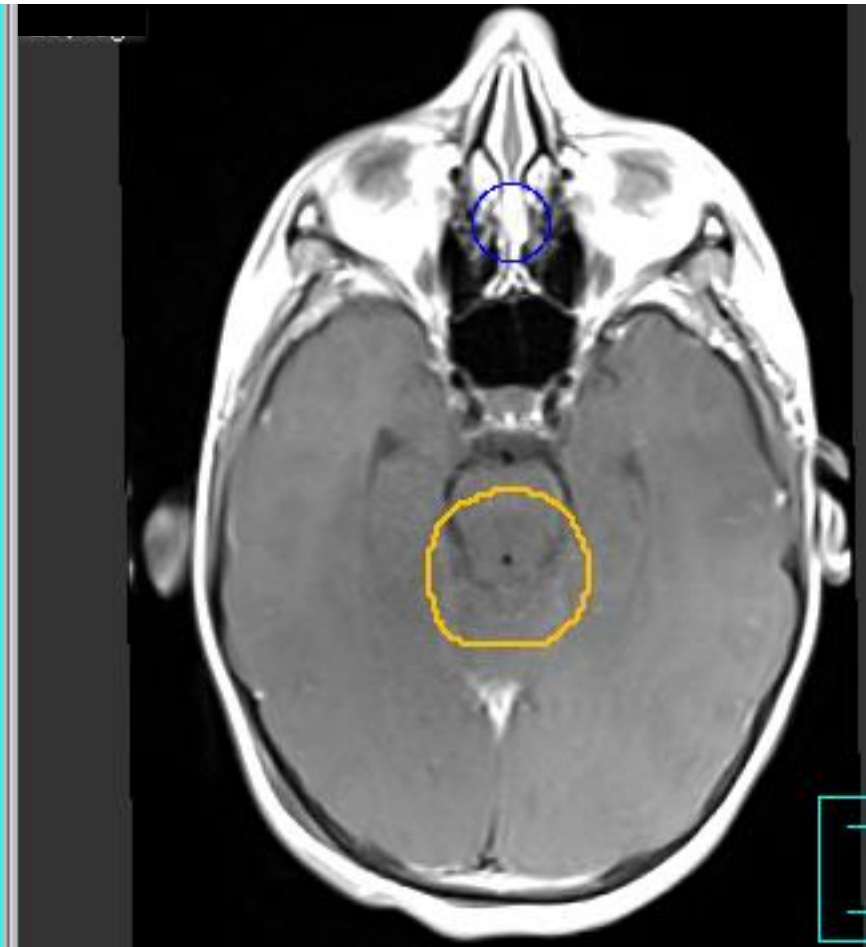
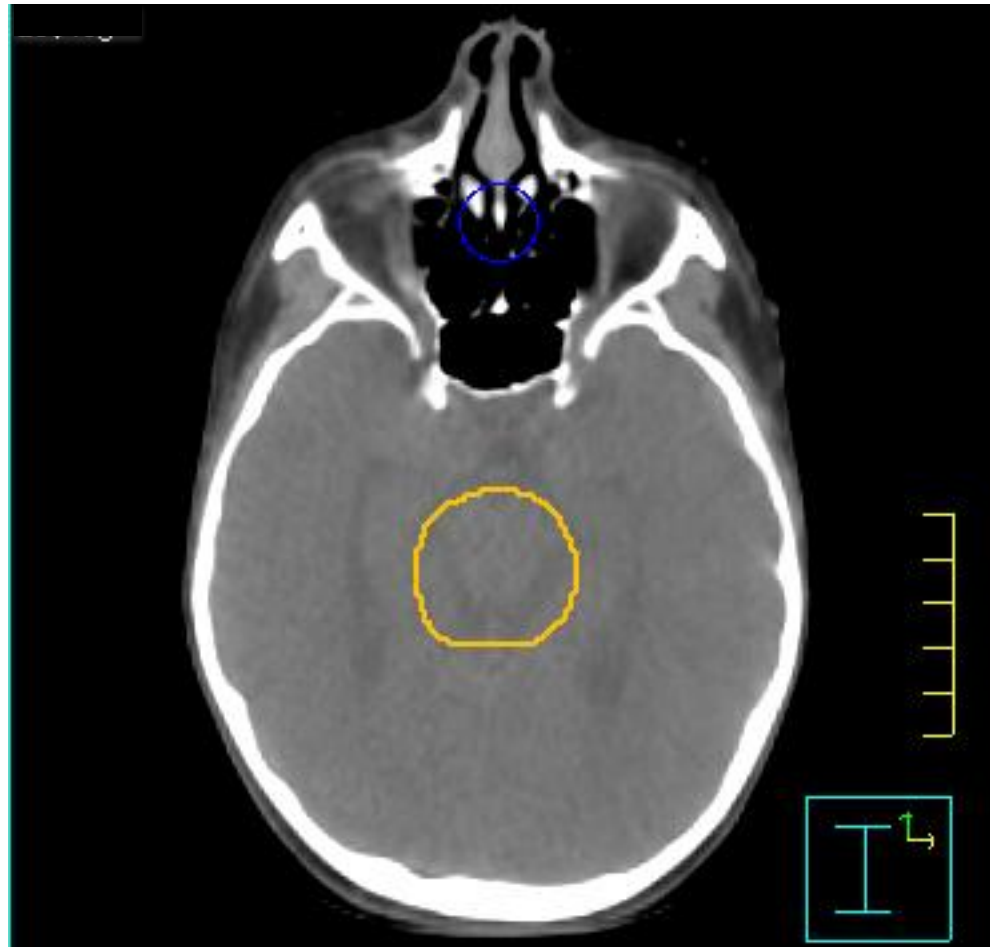


GTV = red

CTV = orange (GTV + 1.5 cm)

CT Sim

Post-op MRI (T1 post) fusion

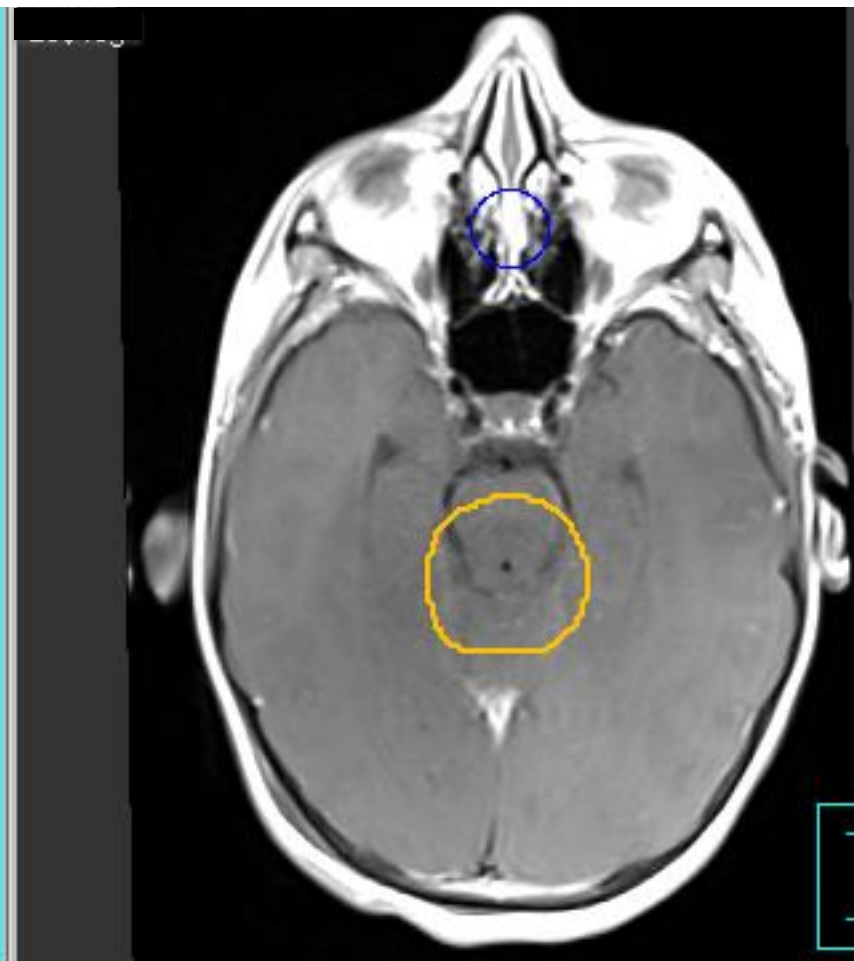
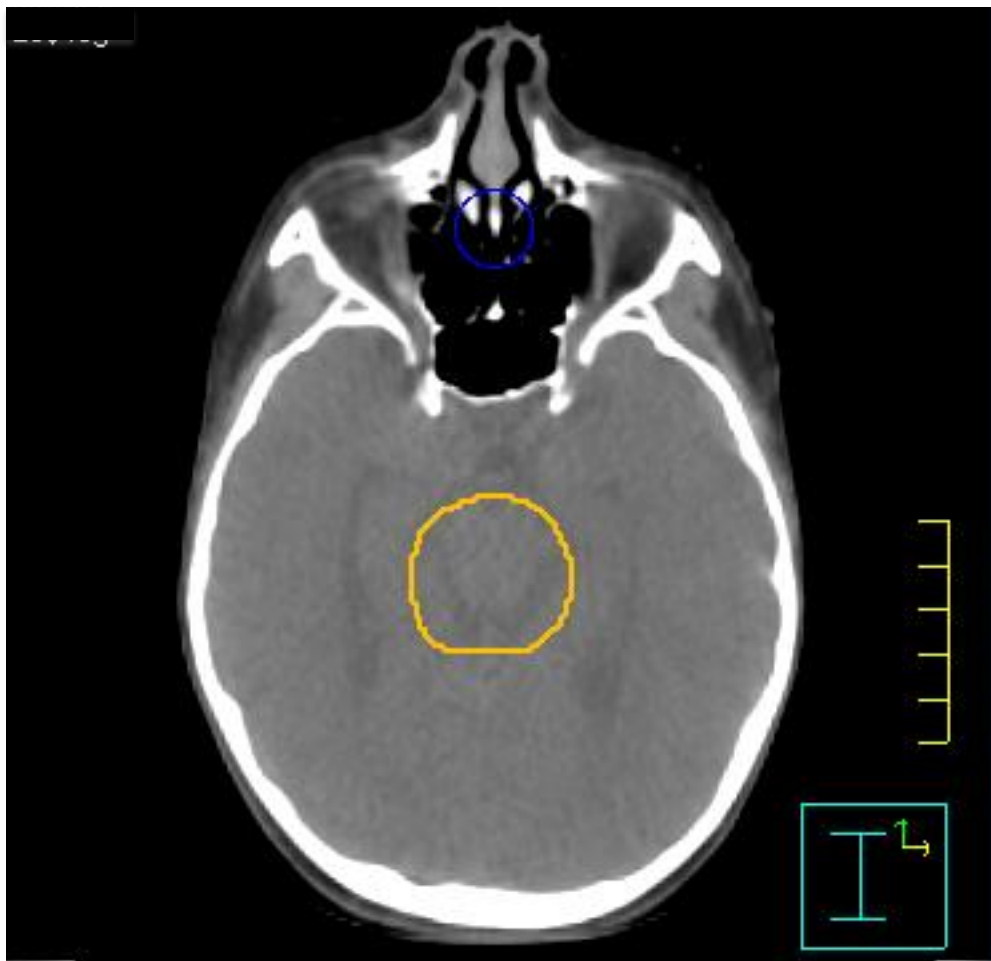


GTV = red

CTV = orange (GTV + 1.5 cm)

CT Sim

Post-op MRI (T1 post) fusion

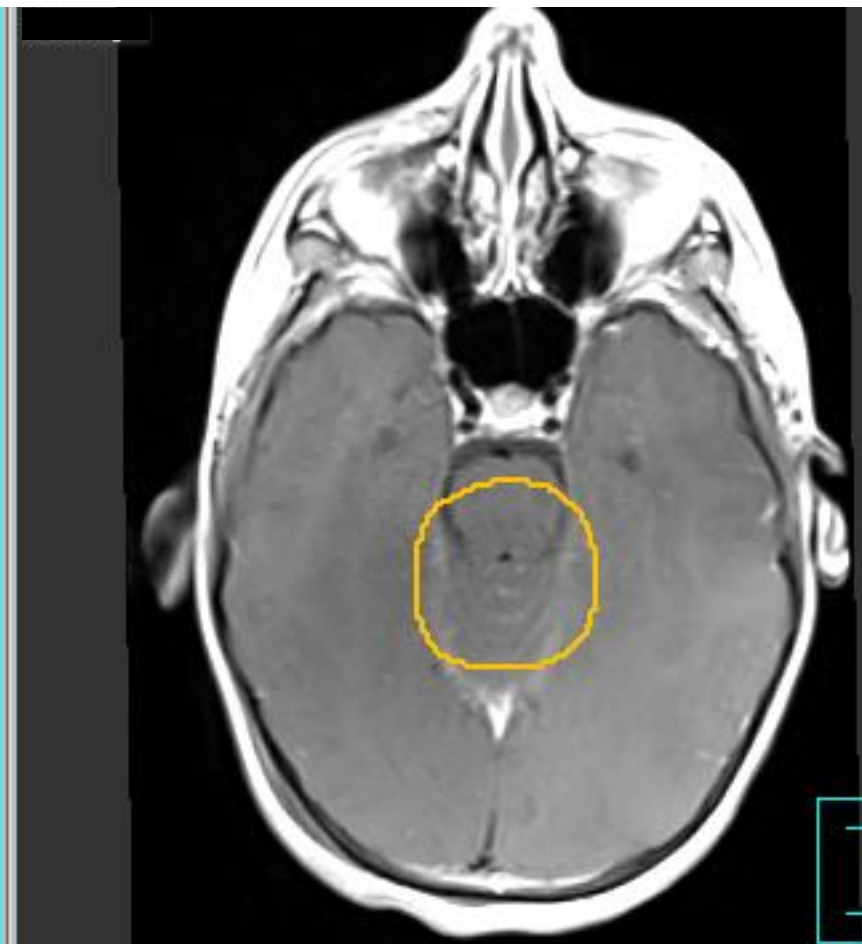
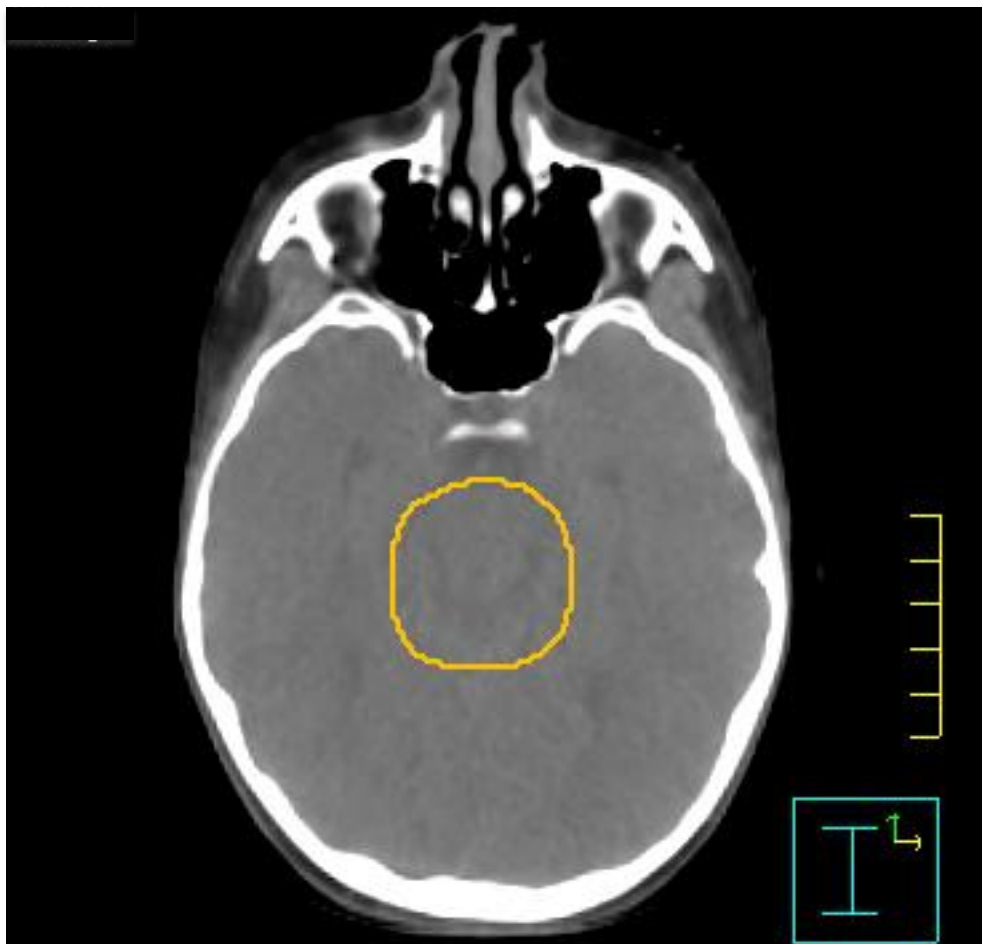


GTV = red

CTV = orange (GTV + 1.5 cm)

CT Sim

Post-op MRI (T1 post) fusion



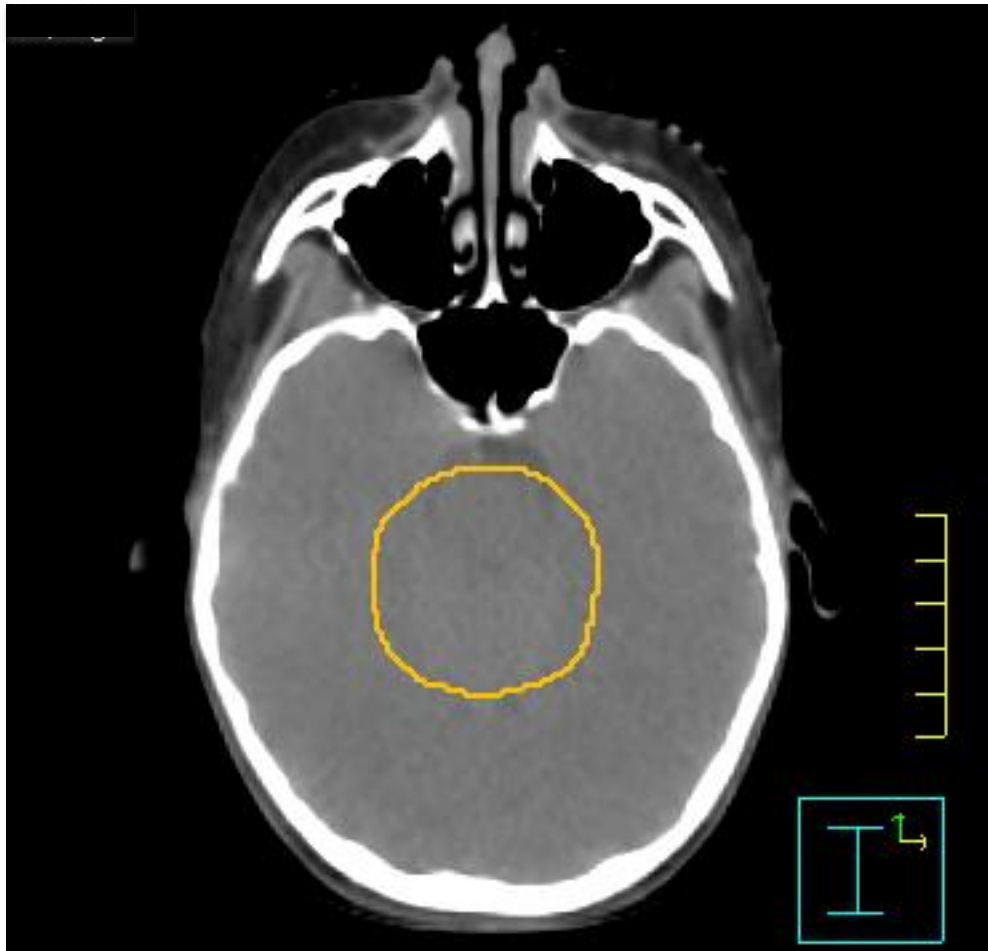
GTV = red

CTV = orange (GTV + 1.5 cm)



CT Sim

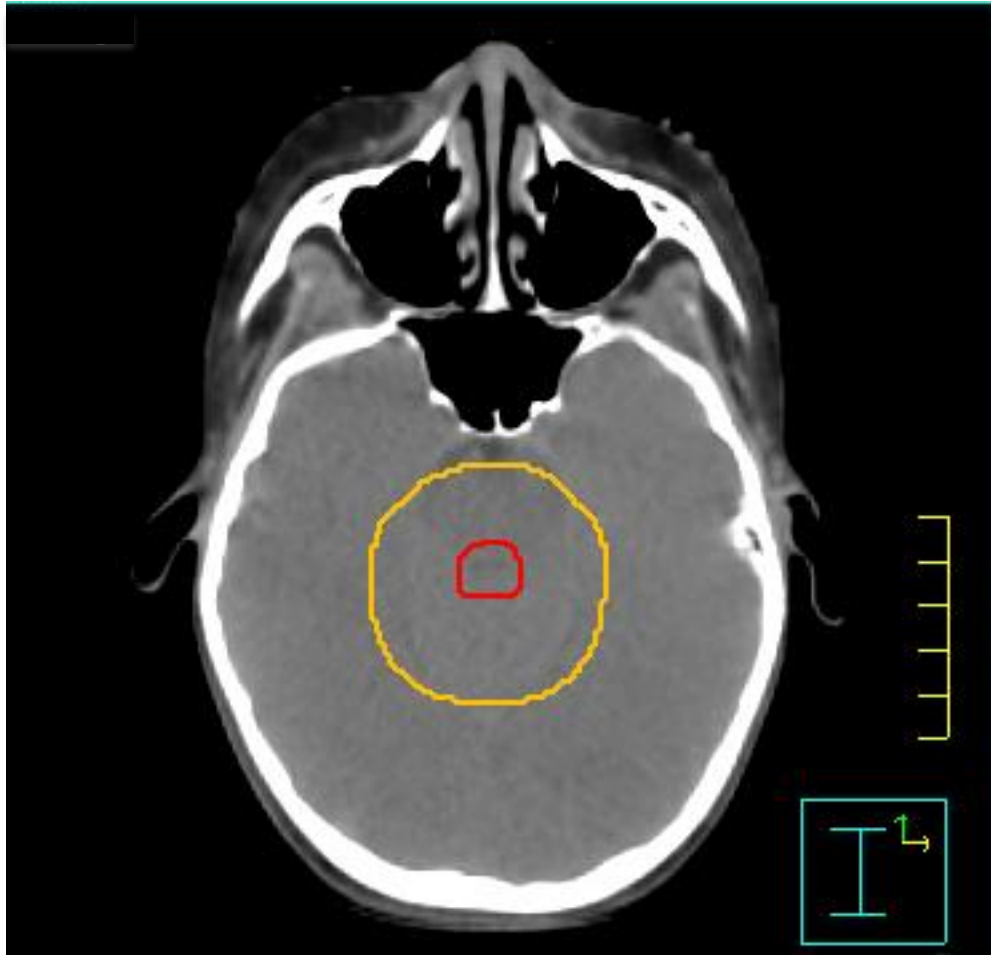
Post-op MRI (T1 post) fusion



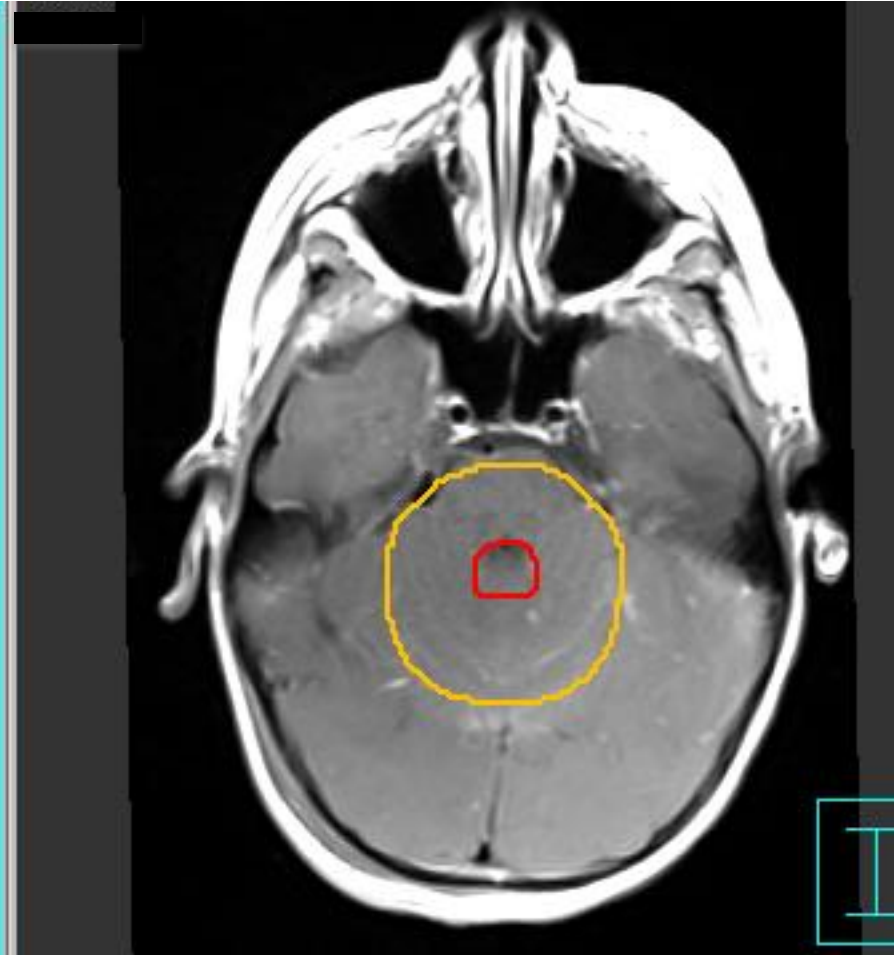
GTV = red

CTV = orange (GTV + 1.5 cm)

CT Sim



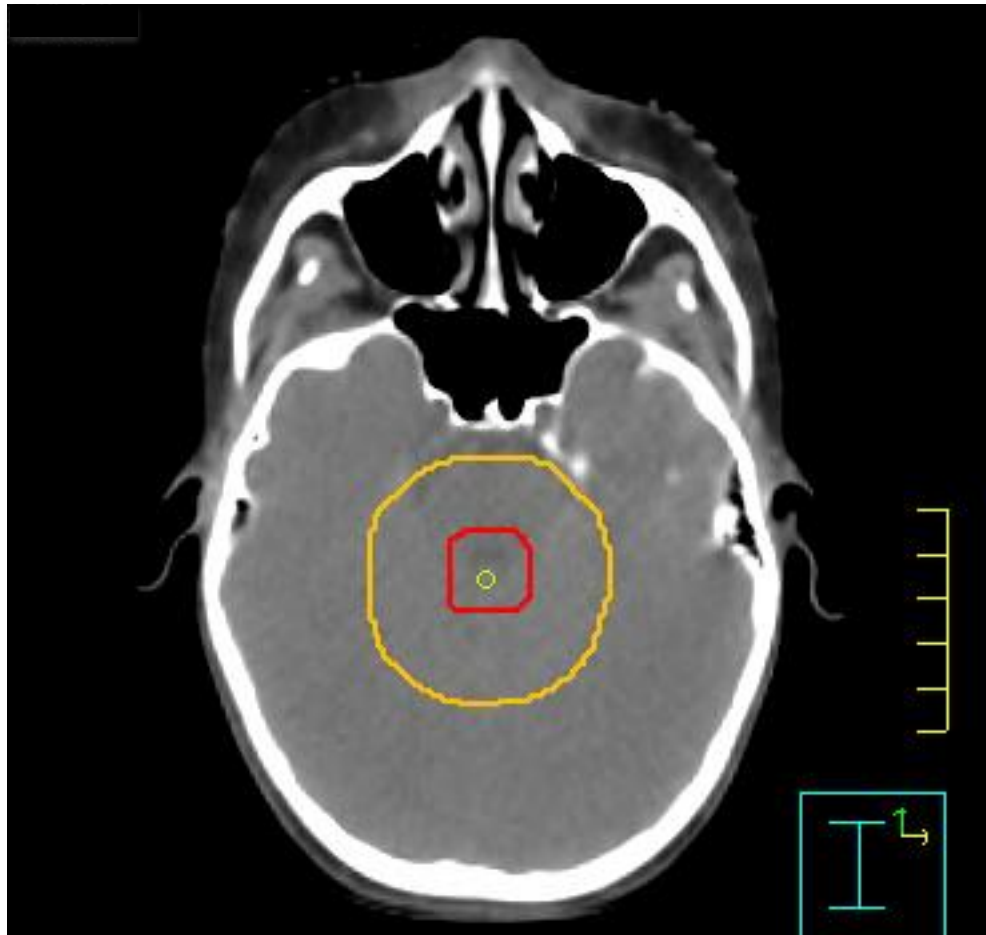
Post-op MRI (T1 post) fusion



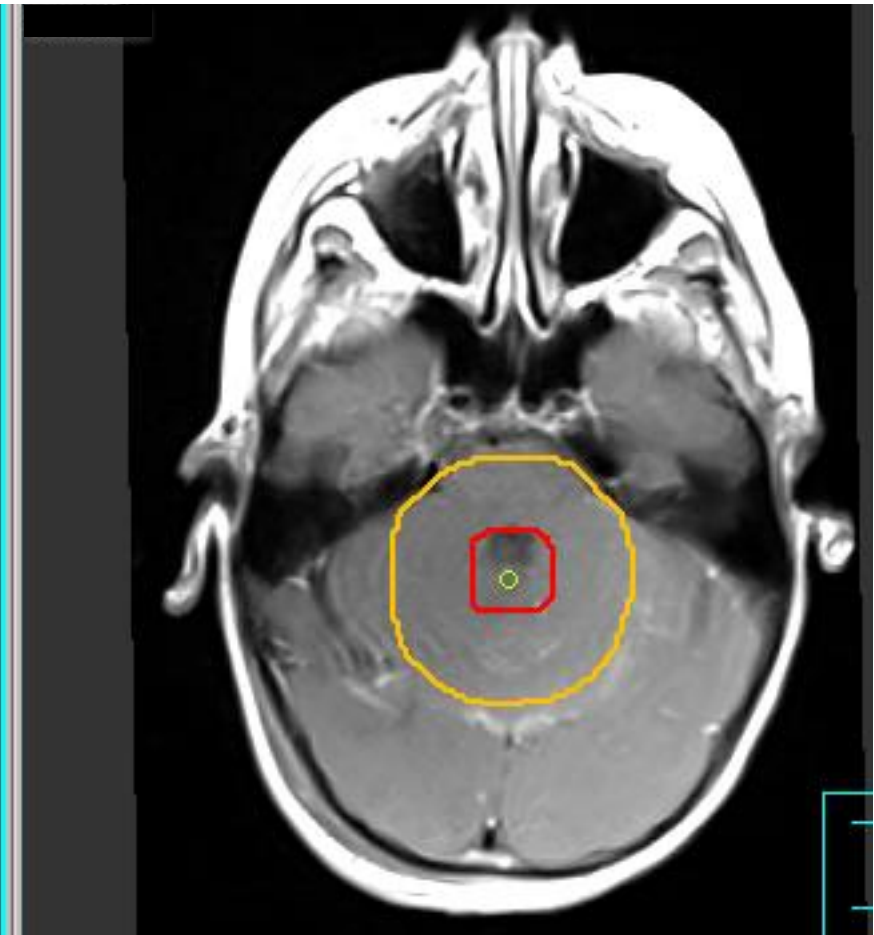
GTV = red

CTV = orange (GTV + 1.5 cm)

CT Sim



Post-op MRI (T1 post) fusion

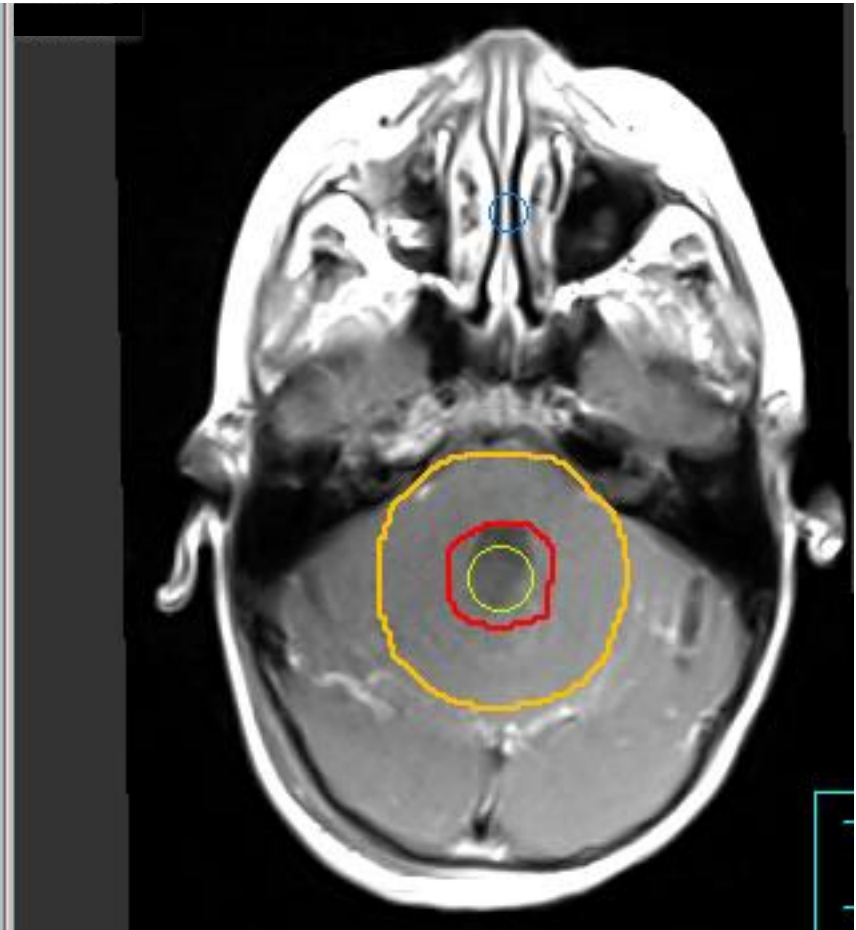
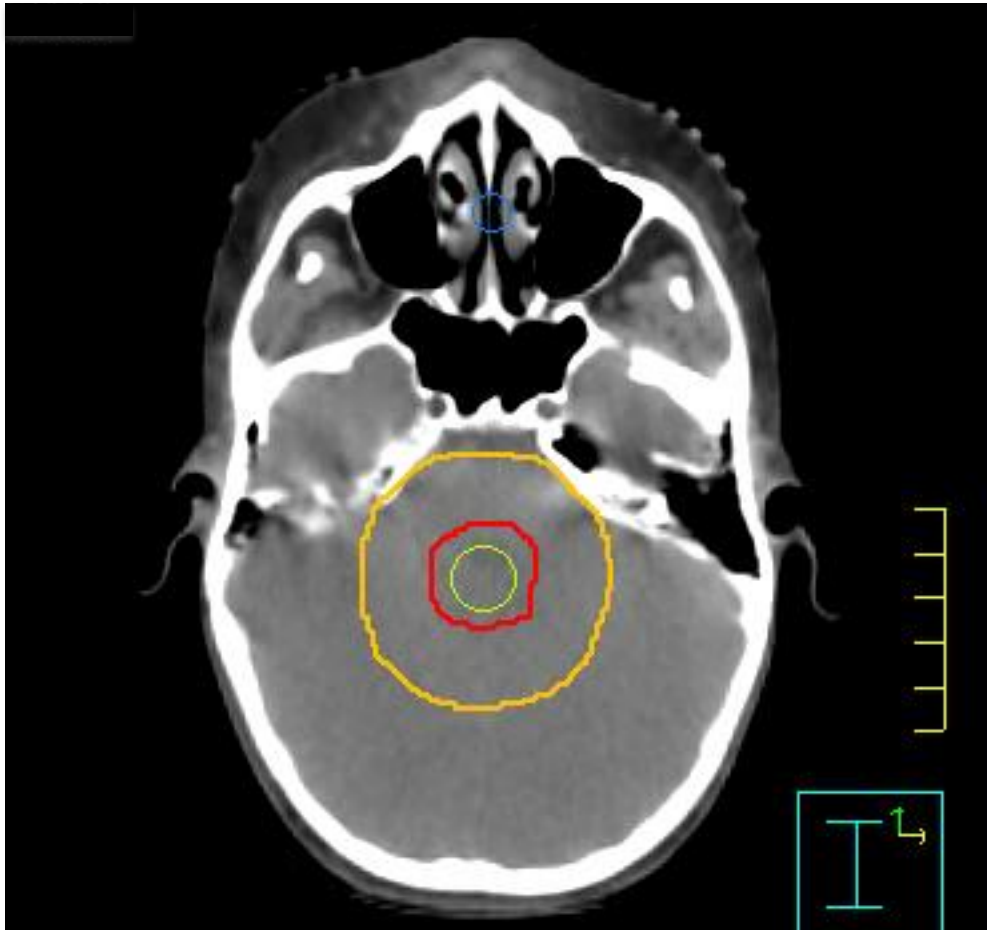


GTV = red

CTV = orange (GTV + 1.5 cm)

CT Sim

Post-op MRI (T1 post) fusion

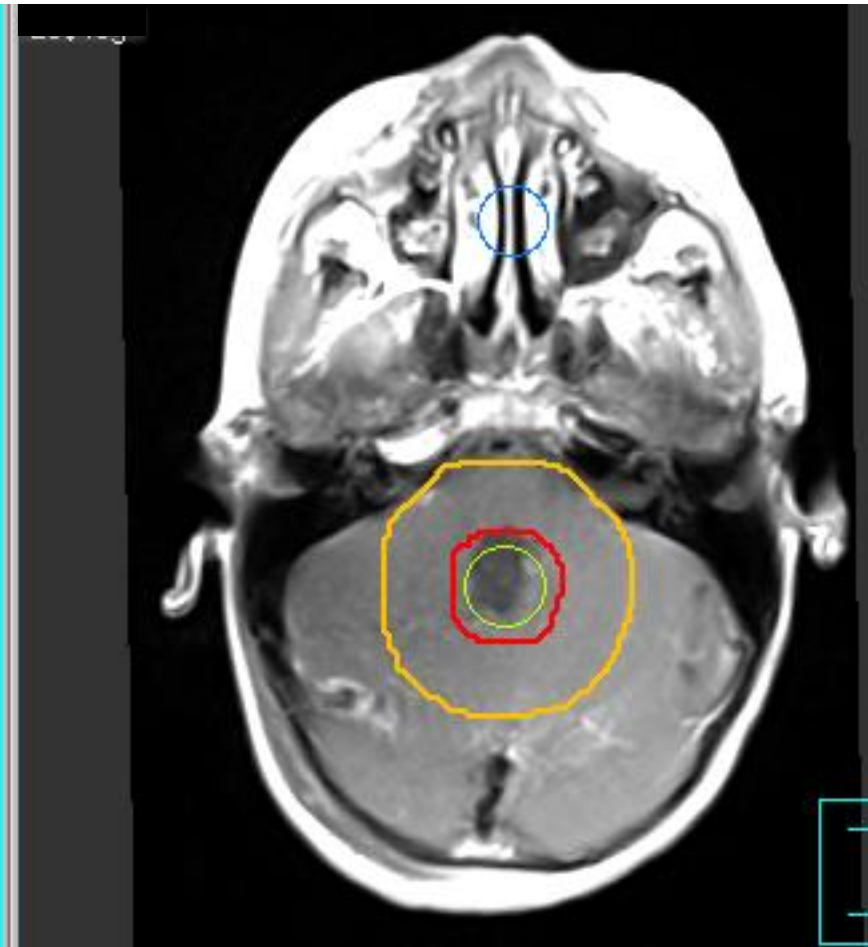
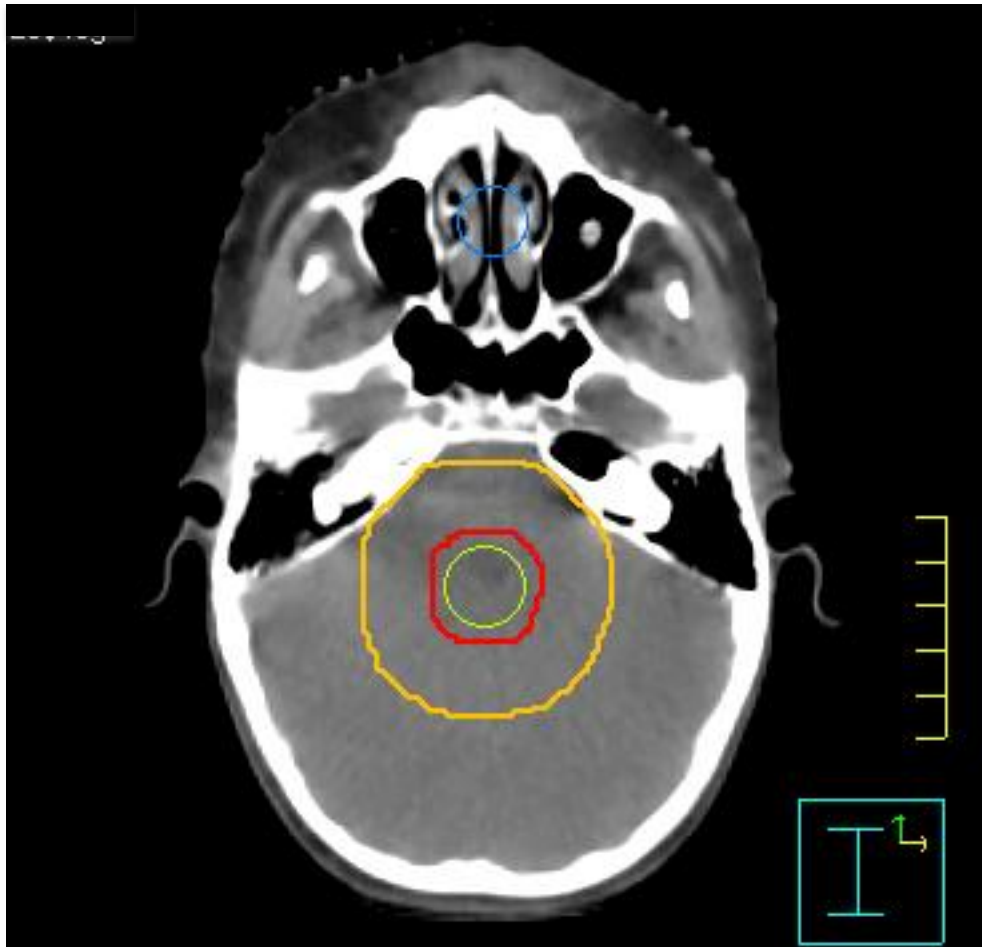


GTV = red

CTV = orange (GTV + 1.5 cm)

CT Sim

Post-op MRI (T1 post) fusion

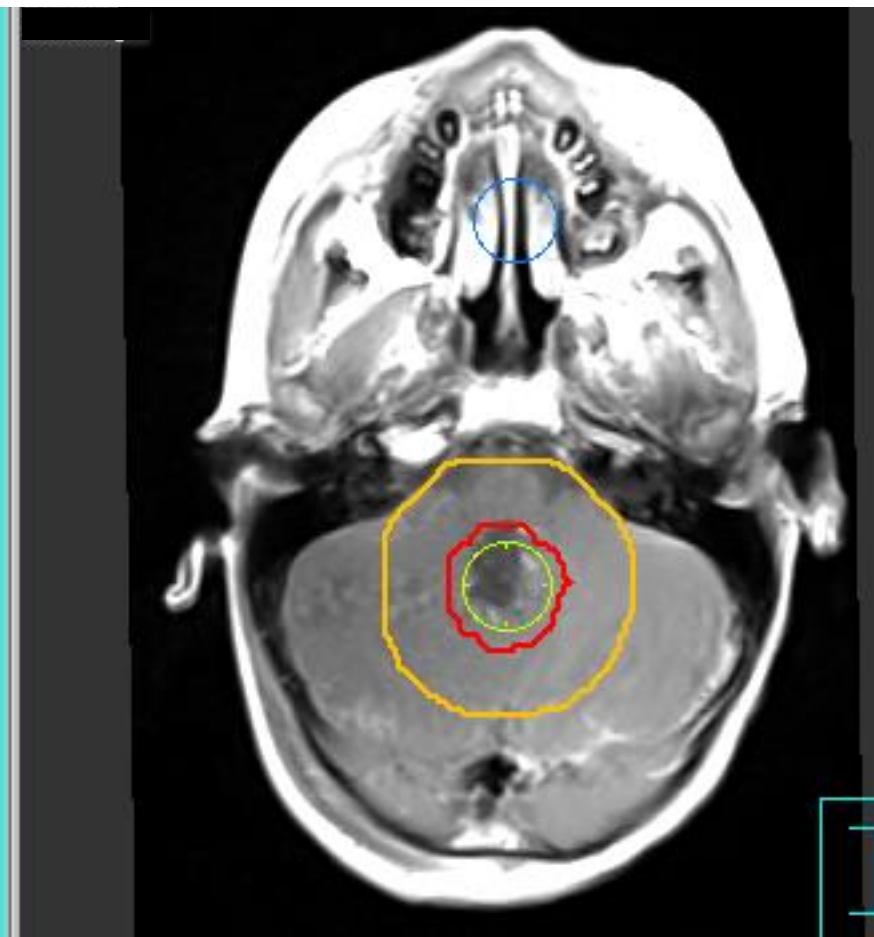
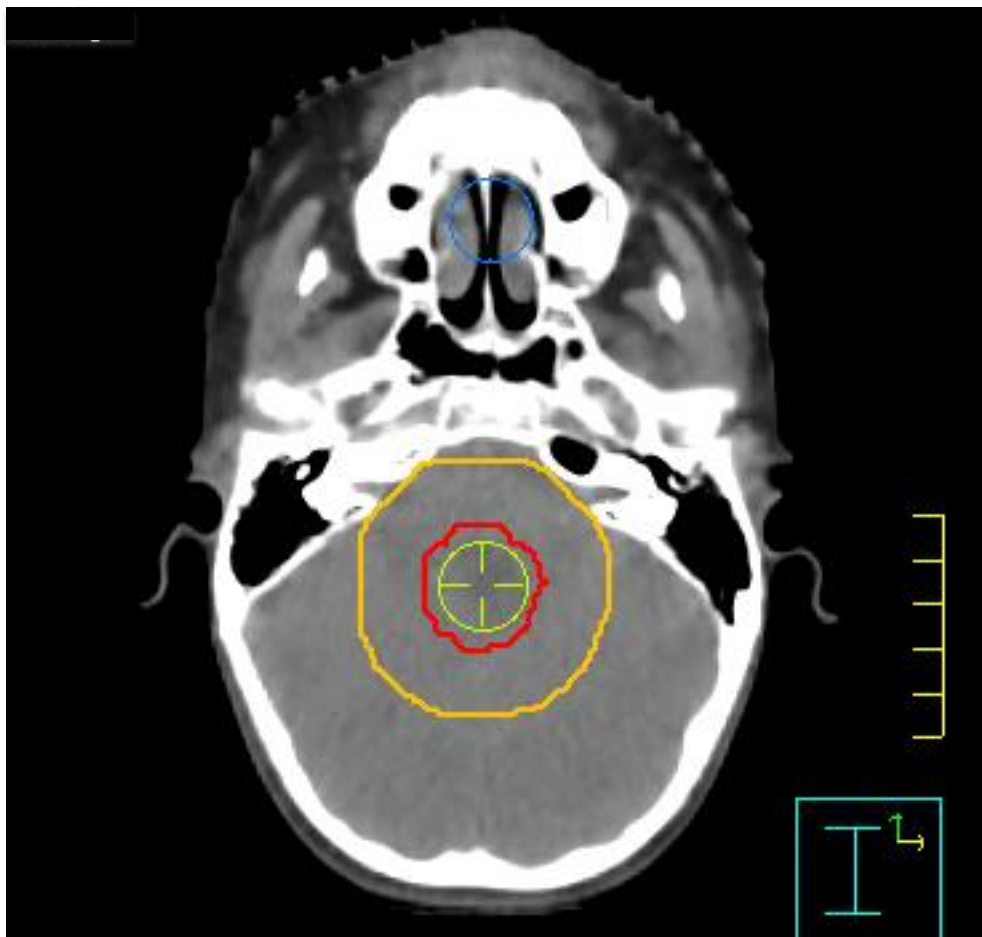


GTV = red

CTV = orange (GTV + 1.5 cm)

CT Sim

Post-op MRI (T1 post) fusion

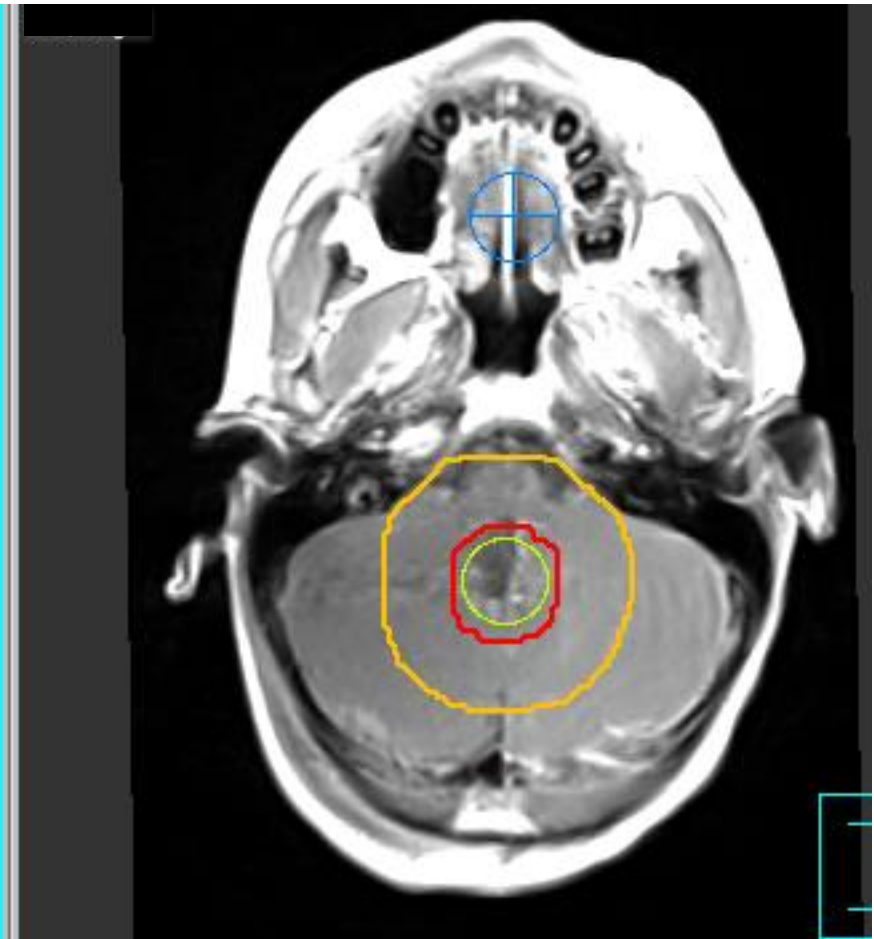
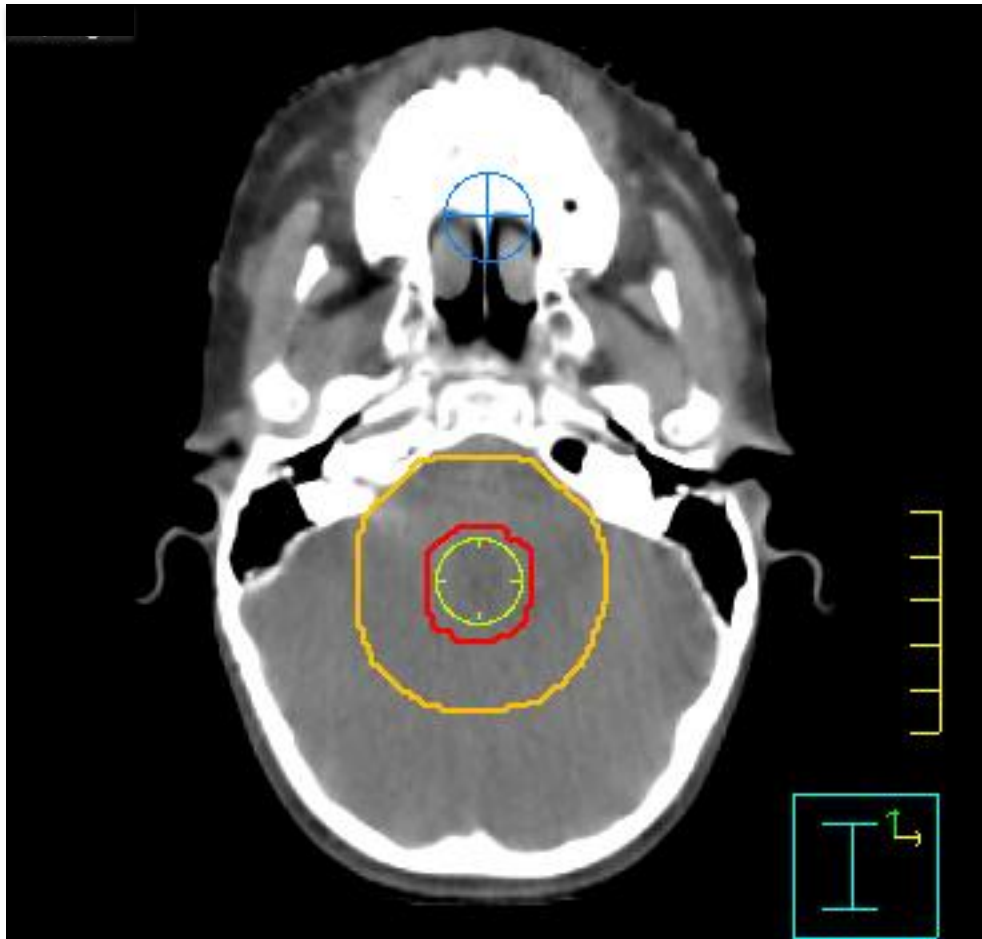


GTV = red

CTV = orange (GTV + 1.5 cm)

CT Sim

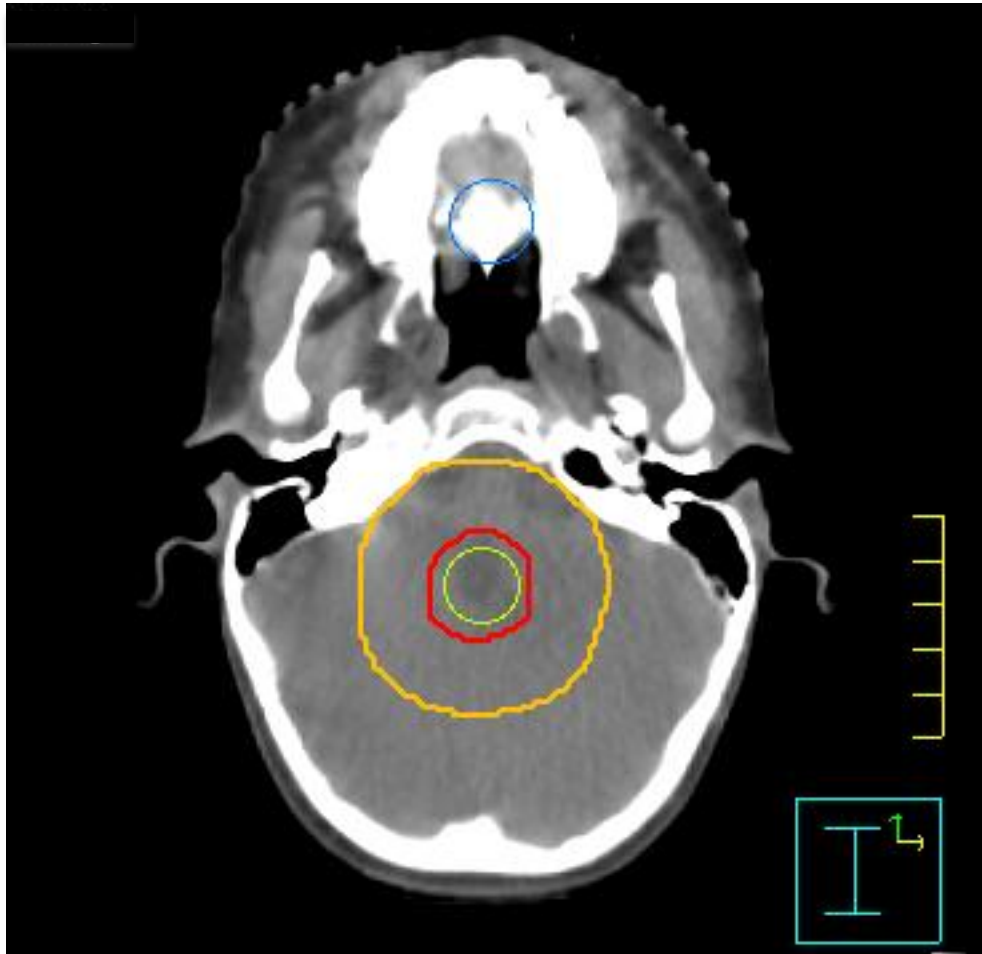
Post-op MRI (T1 post) fusion



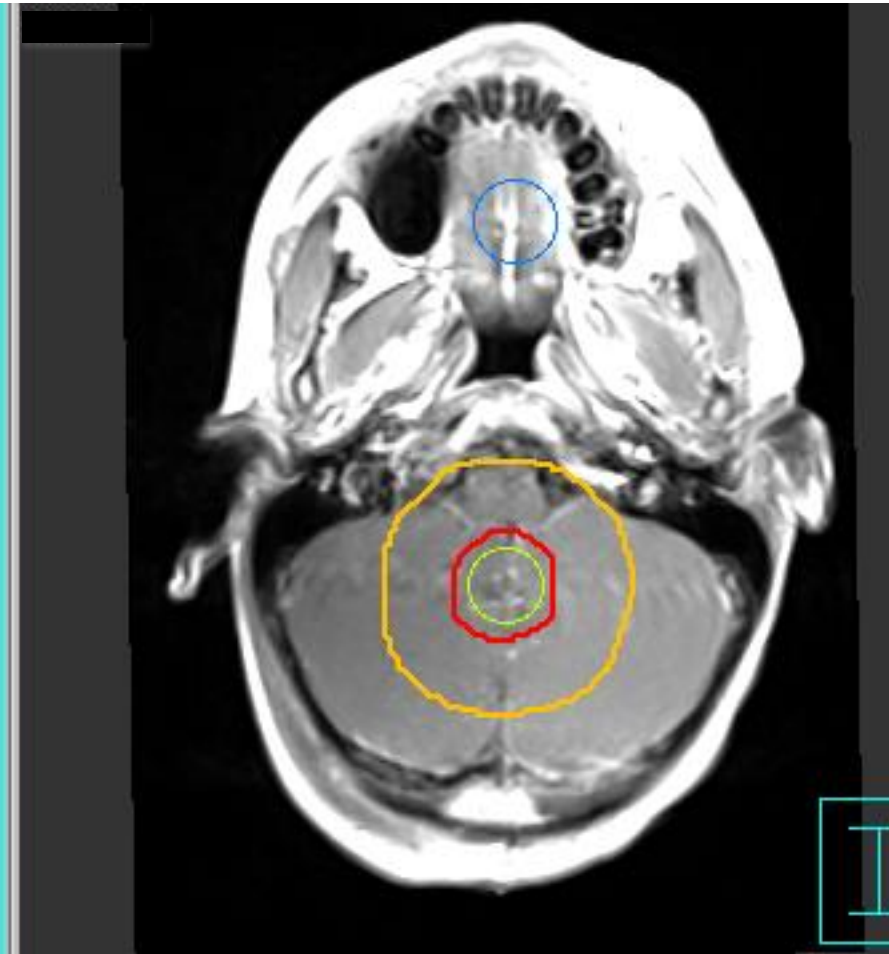
GTV = red

CTV = orange (GTV + 1.5 cm)

CT Sim



Post-op MRI (T1 post) fusion



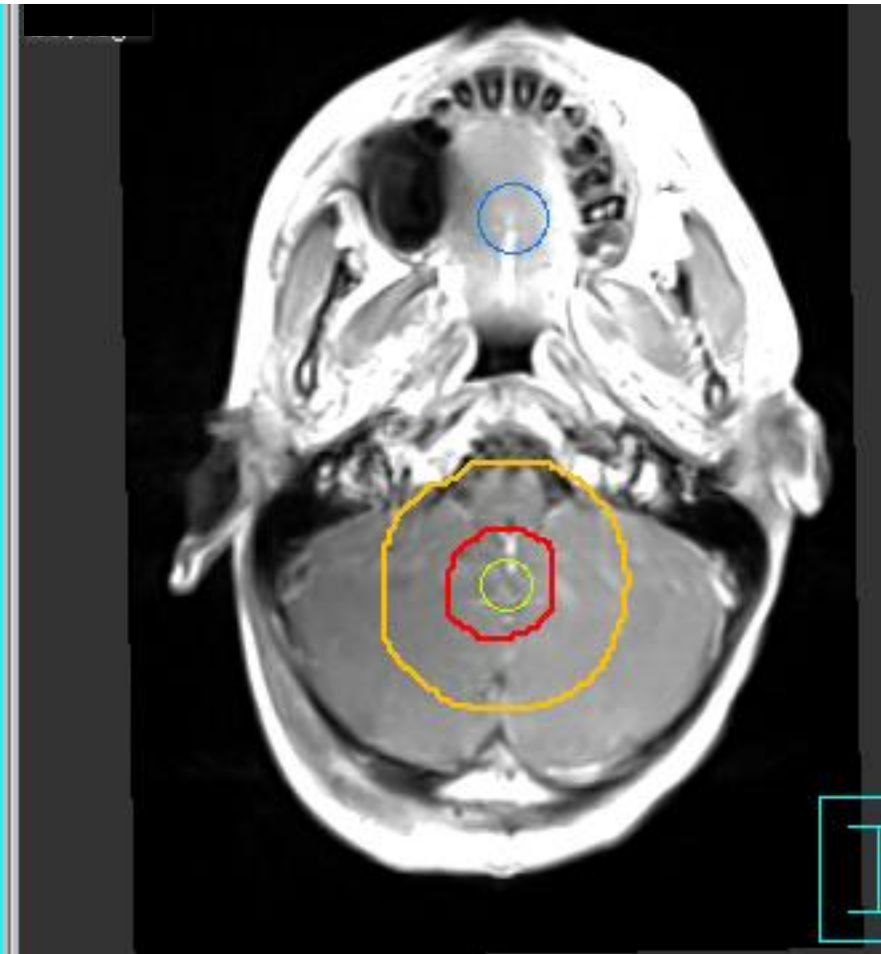
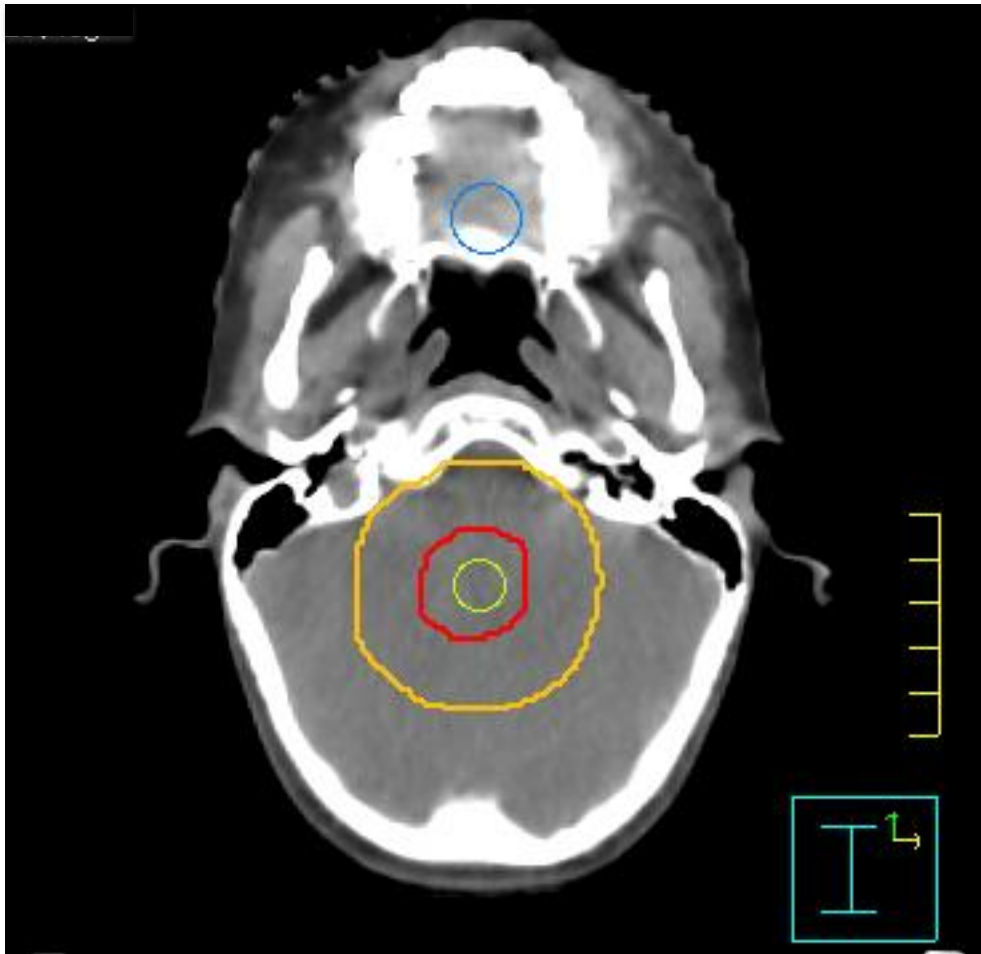
GTV = red

CTV = orange (GTV + 1.5 cm)



CT Sim

Post-op MRI (T1 post) fusion

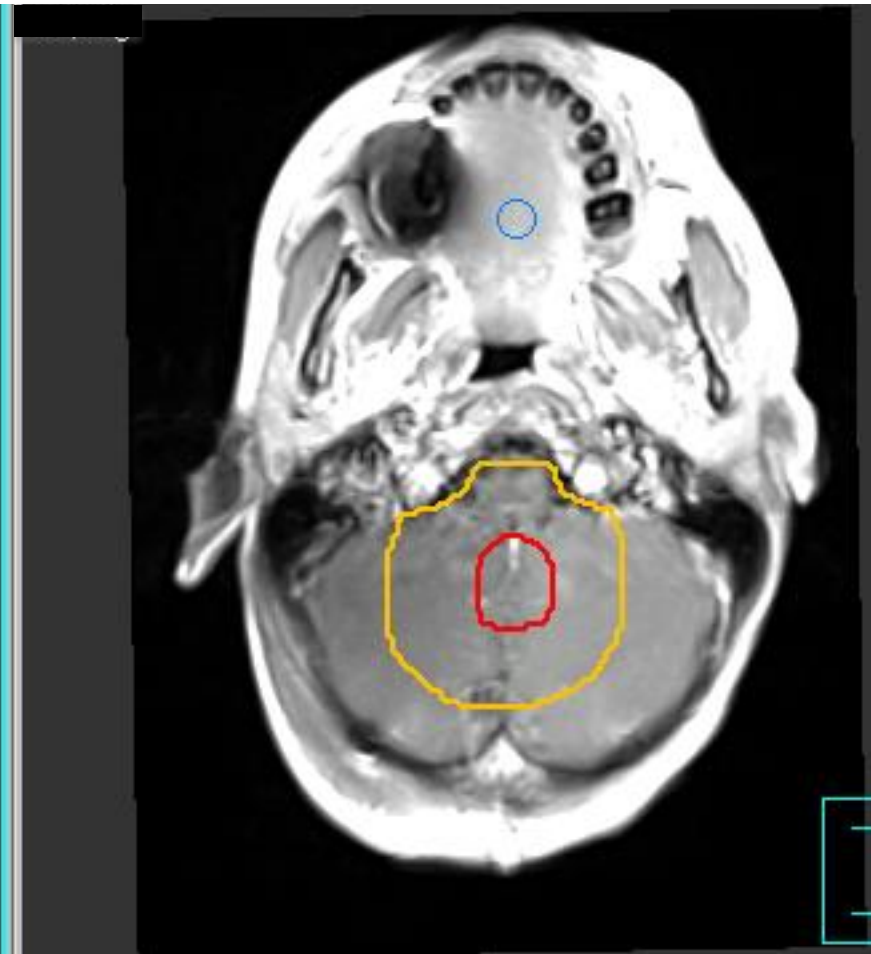
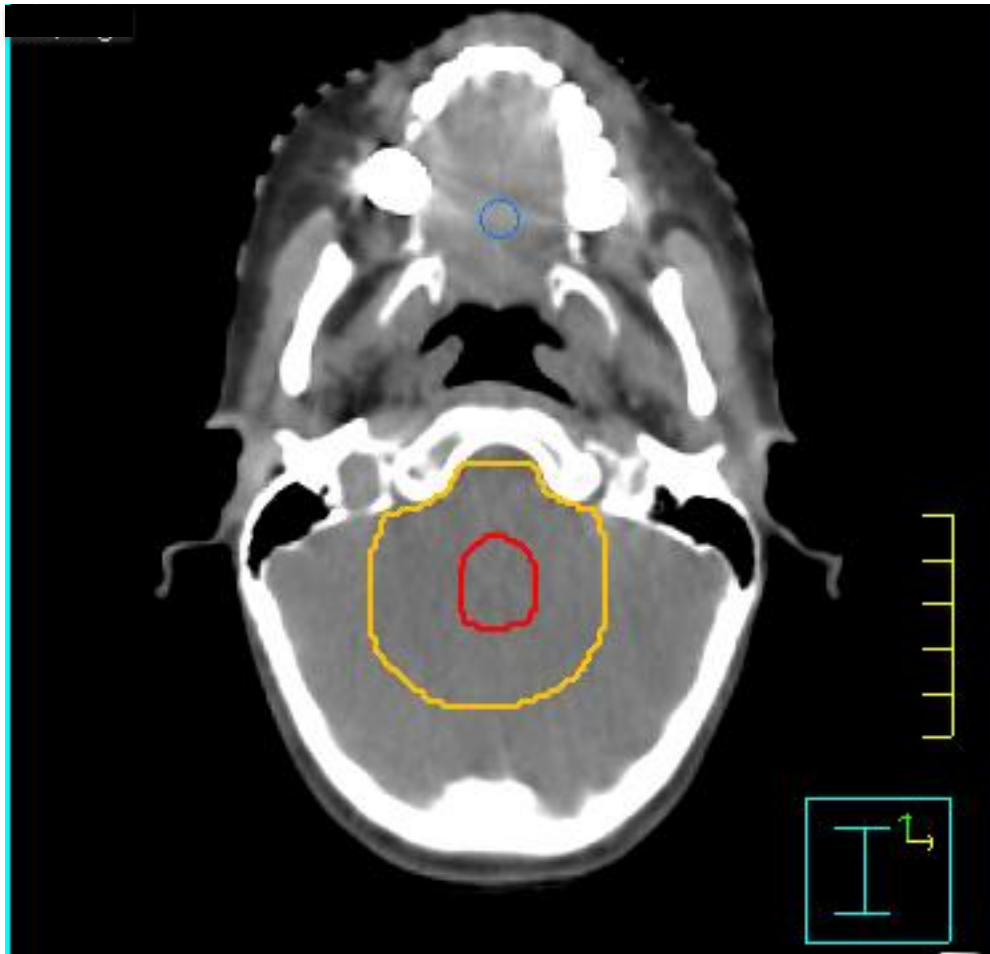


GTV = red

CTV = orange (GTV + 1.5 cm)

CT Sim

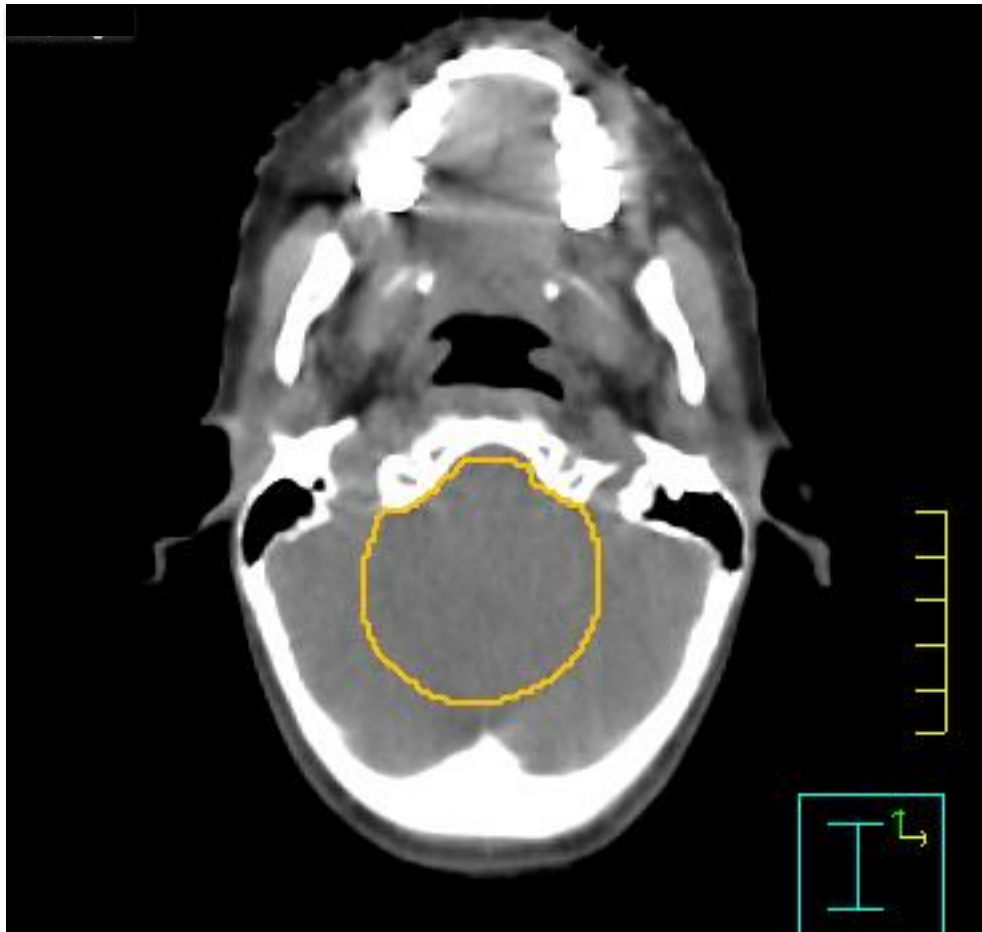
Post-op MRI (T1 post) fusion



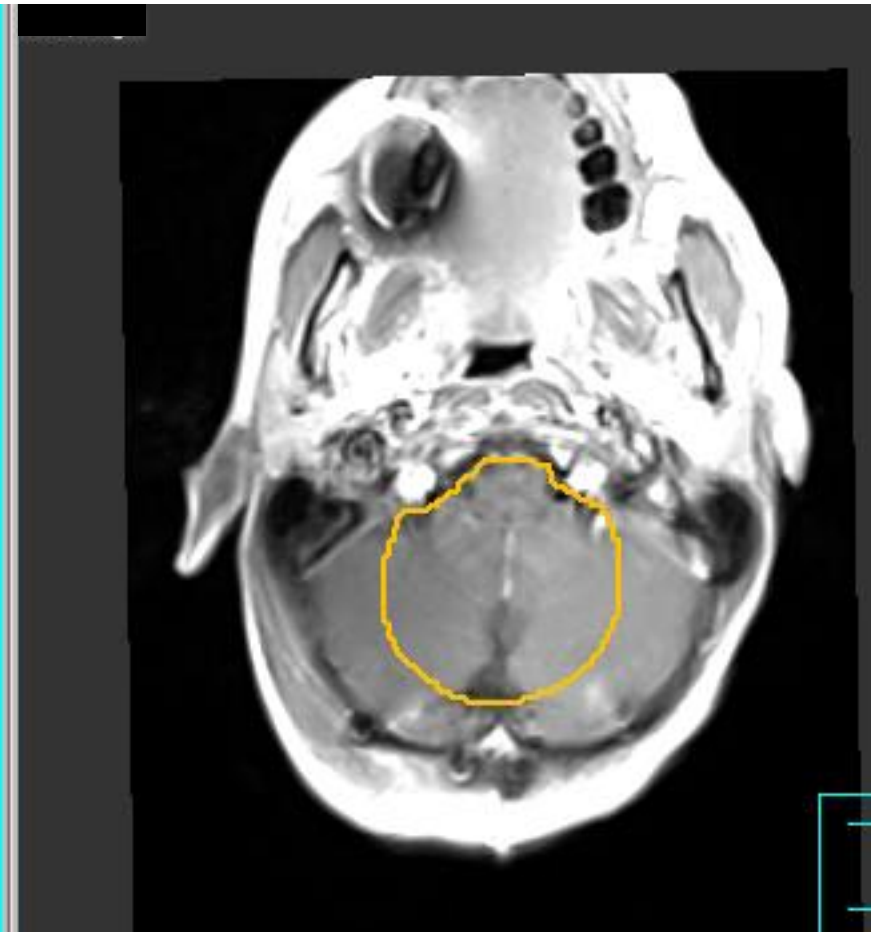
GTV = red

CTV = orange (GTV + 1.5 cm)

CT Sim



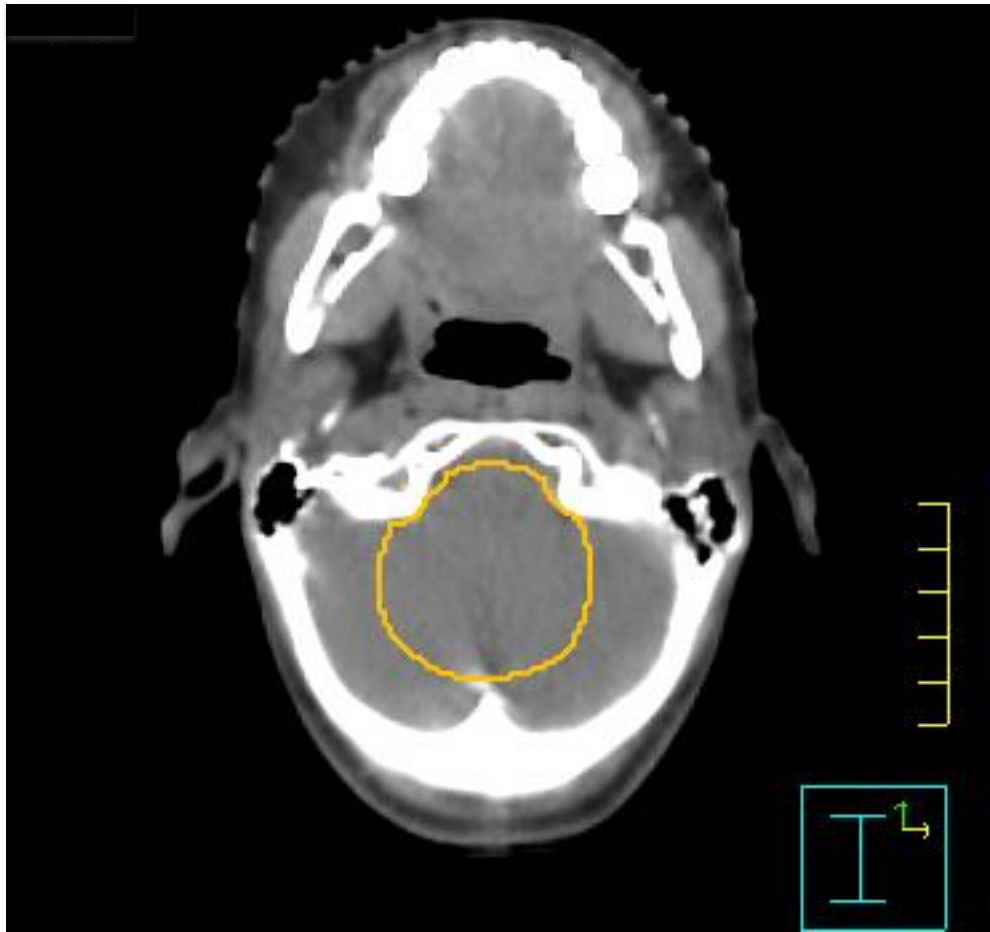
Post-op MRI (T1 post) fusion



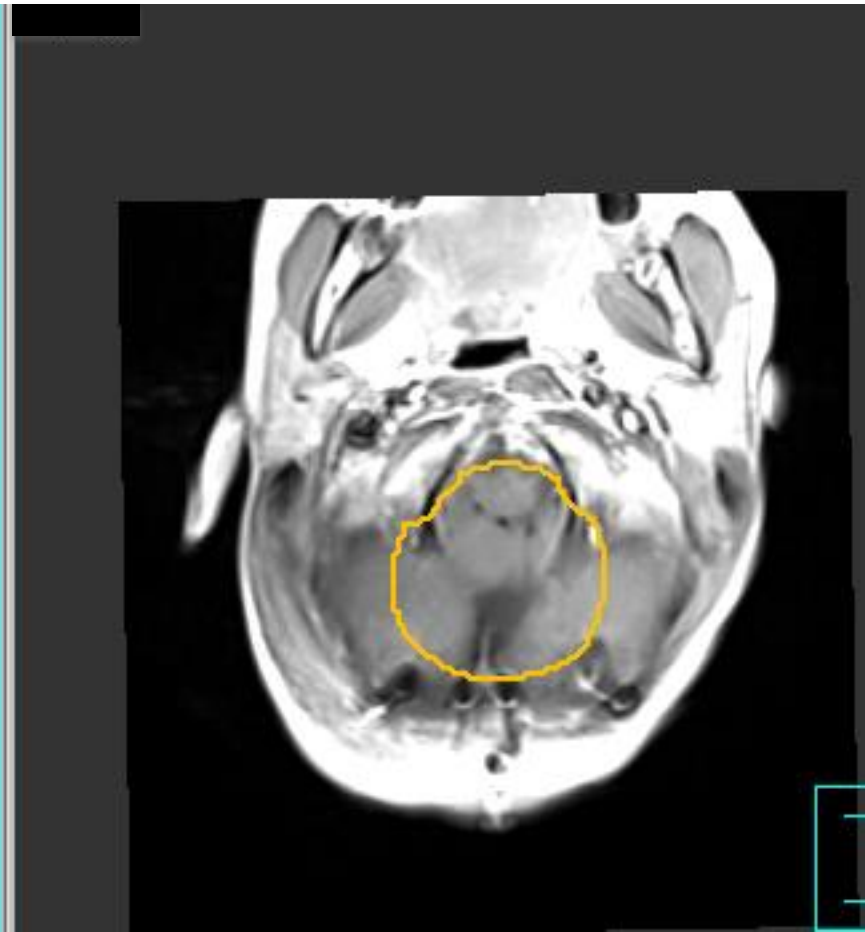
GTV = red

CTV = orange (GTV + 1.5 cm)

CT Sim



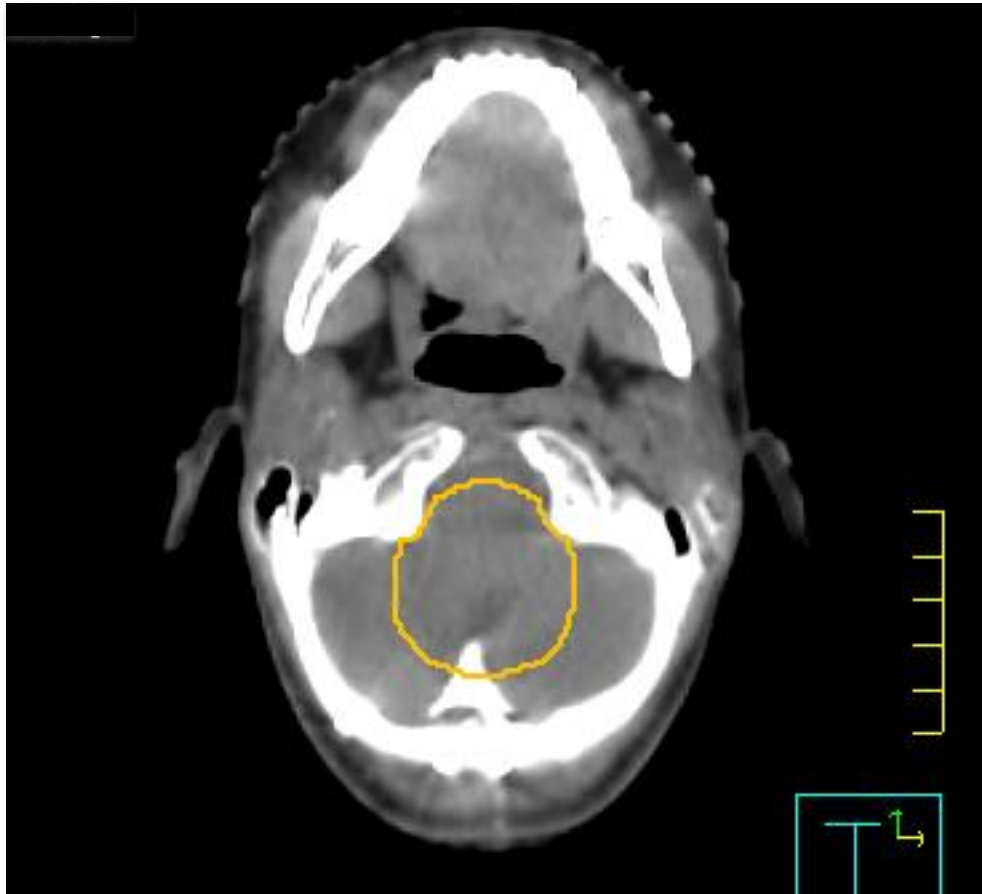
Post-op MRI (T1 post) fusion



GTV = red

CTV = orange (GTV + 1.5 cm)

CT Sim



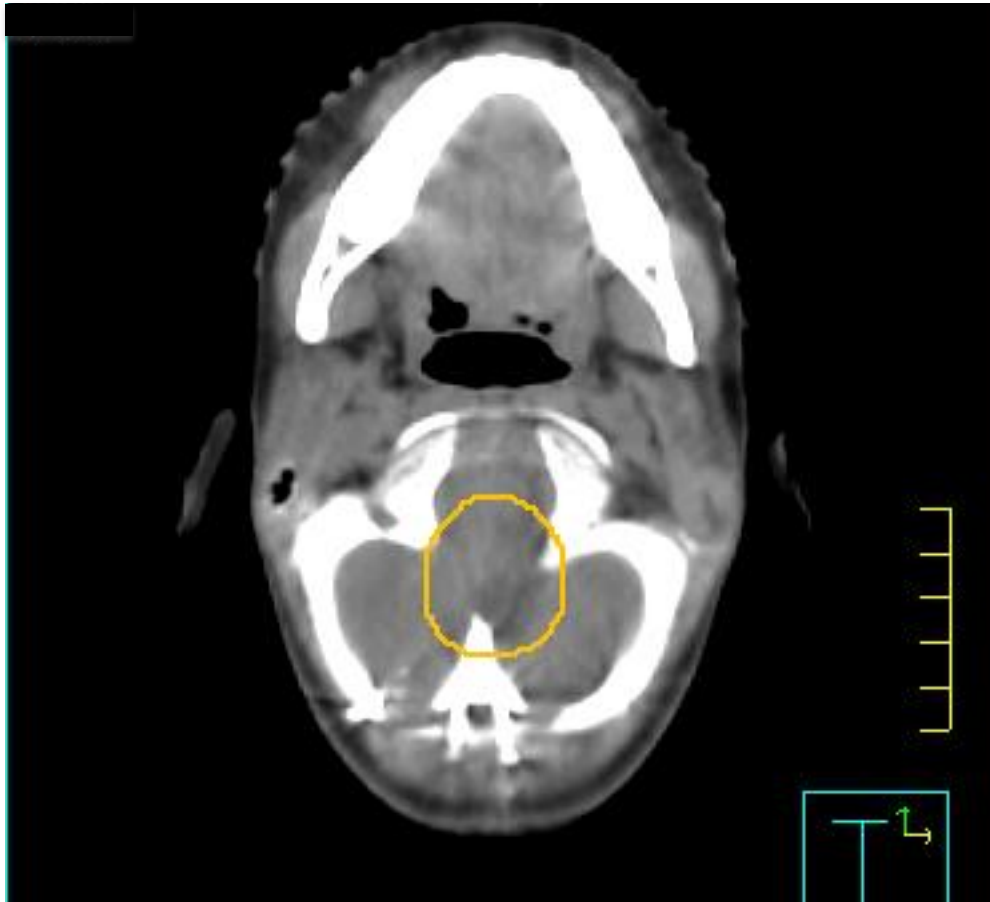
Post-op MRI (T1 post) fusion



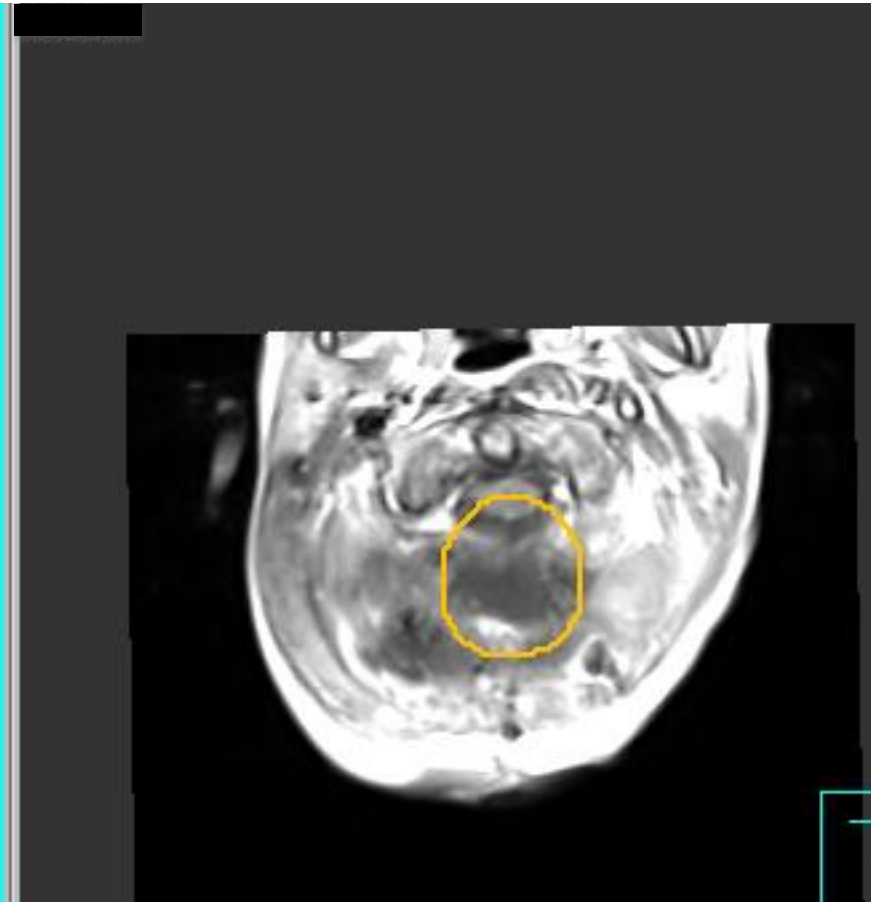
GTV = red

CTV = orange (GTV + 1.5 cm)

CT Sim



Post-op MRI (T1 post) fusion



GTV = red

CTV = orange (GTV + 1.5 cm)

PTV = green (CTV + 5 mm)

