

ARROCase

Nasopharynx Cancer

Kara D. Romano, MD

Daniel M. Trifiletti, MD

Paul W. Read, MD

University of Virginia

Case: History

H&P:

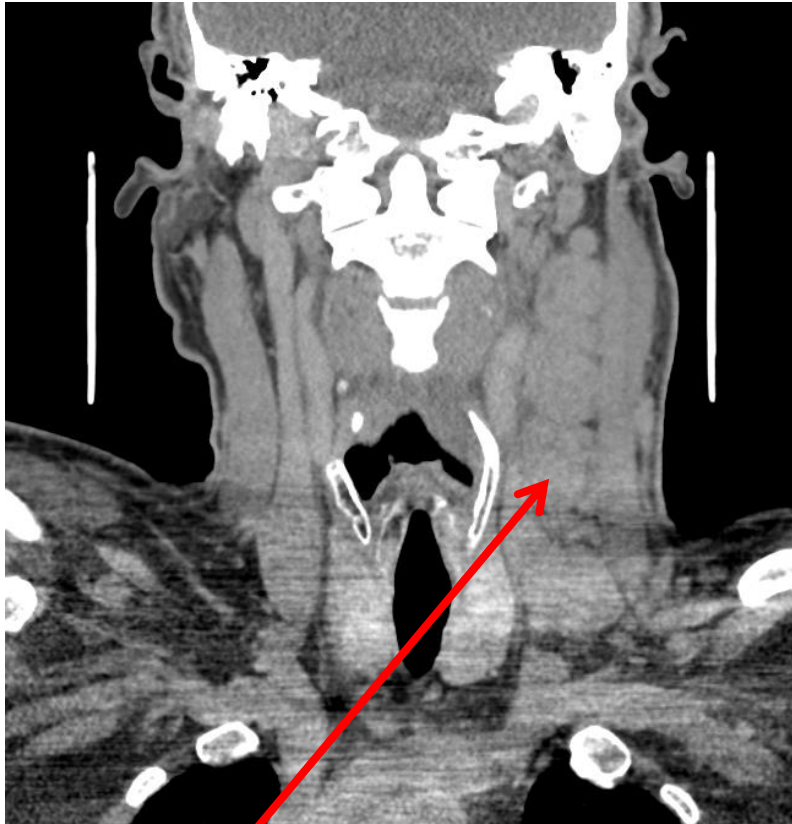
- 37 yo male presents with left-sided neck mass, ear pressure, otalgia, and pain radiating down the ipsilateral neck.
- ROS:
 - + nose bleeds, numbness on the left cheek
 - - trismus, dysphagia, odynophagia, diplopia, or changes in vision
- Pertinent physical exam findings:
 - ECOG: (0) Fully active
 - HEENT: No mucosal lesions on direct/indirect examination. Poor dentition - no molars. **Perforated left TM** with erythematous auditory canal. Tenderness to palpation of the left post-auricular space.
 - Lymphatics: **Firm, matted adenopathy of the left level II-III nodes, with palpable ipsilateral supraclavicular nodes.**
- Flexible nasal laryngoscopy: **ulcerated lesion of the left nasopharynx** obstructing the left Eustachian tube orifice, **fullness of the left fossa of rosenmuller**, extending toward the soft palate and posterior pharyngeal wall with partial obstruction of the pharynx.

Common presenting signs & symptoms

- Neck mass
- Epistaxis
- Middle ear effusion/otalgia/decreased hearing
- Headache/pain
- Nasal congestion and drainage
- Trismus
- Cranial nerve deficits
 - Petro-sphenoidal syndrome (CN III-IV, VI): Oculomotor signs/symptoms
 - Retro-parotidian syndrome (CN IV-XII): Enophthalmos, ptosis, miosis

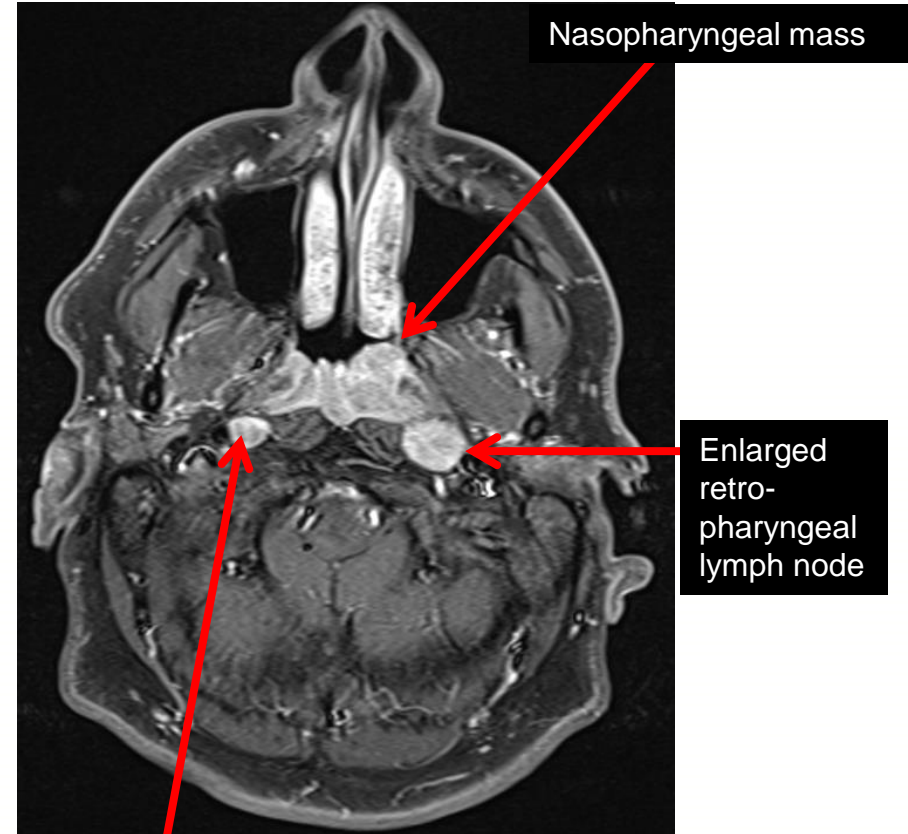
Case: Imaging

CT Neck



Multiple enlarged bilateral cervical lymph nodes (levels II – V), including supraclavicular node (level IV)

MRI Orbit, Face, & Neck



Nasopharyngeal mass

Enlarged retro-pharyngeal lymph node

Enlarged contralateral retro-pharyngeal lymph node

Work-Up & Evaluation¹

- H&P including complete head & neck physical exam
 - Tobacco history
- Flexible nasopharyngeal fiber-optic laryngoscopy
- Labs
 - EBV titers
- Biopsy of the primary site or FNA of neck
- MRI w/ contrast – include skull base, nasopharynx, and neck to clavicles
- CT Neck & Chest, as clinically indicated
- PET-CT (especially for non-keratinizing histology, endemic phenotype, N2 or N3, and stage III – IV)
- Medical oncology consultation
- Dental evaluation
- Nutrition/GI evaluation
- Speech and swallow evaluation
- Audiology evaluation

Differential Diagnosis of malignancy for nasopharyngeal mass

If small nasopharyngeal mass and confined to the mucosa:

- Prominent, but normal adenoidal tissue
- Nasopharyngeal lymphoma
- Early primary nasopharyngeal malignancy

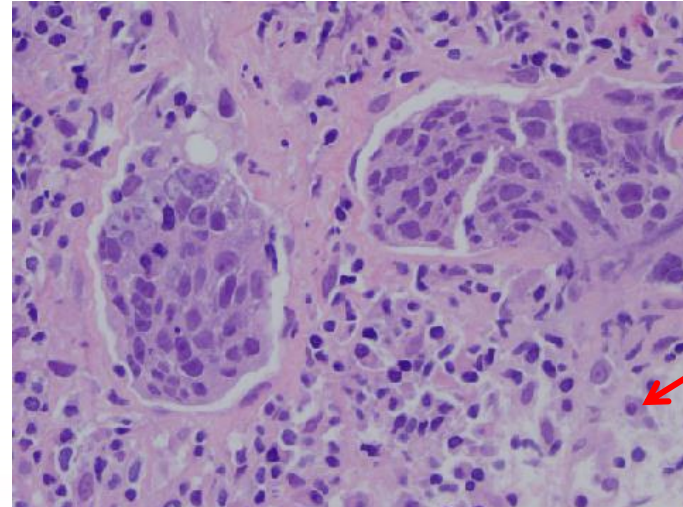
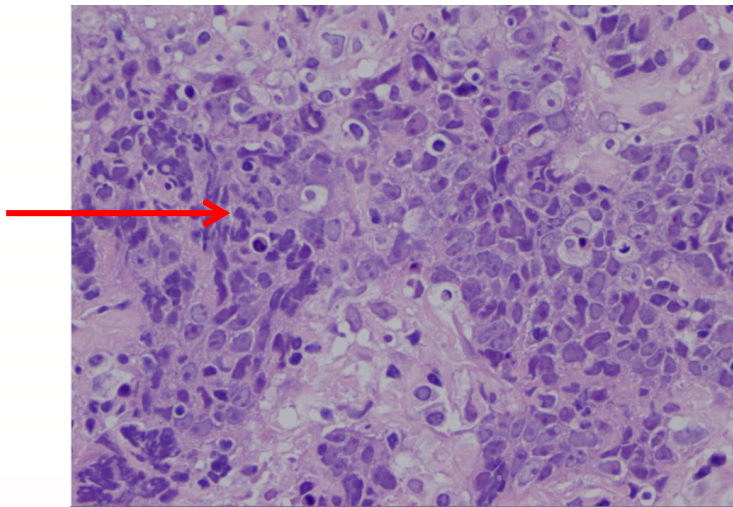
If larger nasopharyngeal mass +/- involvement of the skull base:

- Primary nasopharyngeal malignancy
- Adenoid cystic carcinoma
- Papillary adenocarcinoma
- Melanoma
- Plasmacytoma
- Lymphoma
- Chordoma/Chondrosarcoma
- Meningioma
- Rhabdomyosarcoma/other sarcoma
- Metastases

Case: Pathology

- He underwent US-guided FNA of the left cervical neck mass
- Pathology: poorly differentiated carcinoma
 - Pleomorphic epithelioid cells in a background of lymphocytes
 - + cytokeratin
 - p16 negative
 - EBV in-situ hybridization negative
 - Neuron specific enolase negative

Epithelioid carcinoma



Lymphocyte

Nasopharynx Cancer

Incidence:

- 5 per 1 million in the USA
- 100 – 400 per 1 million in Asia/Africa

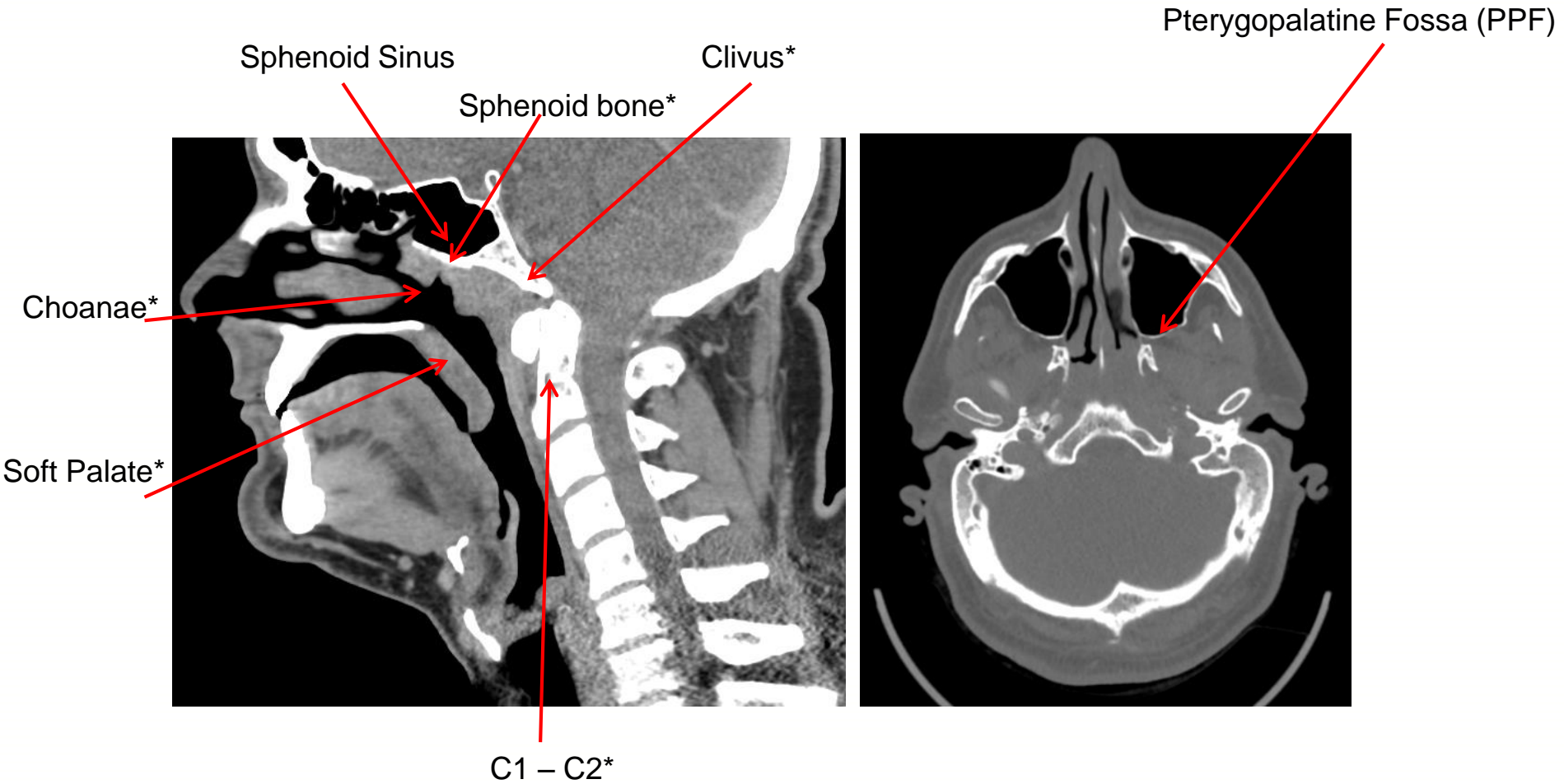
Risk Factors:

- Salted or pickled foods
- Metal dust
- Epstein-Barr virus (EBV)
- Smoking
- HLA/Genetic

Presenting signs/symptoms:

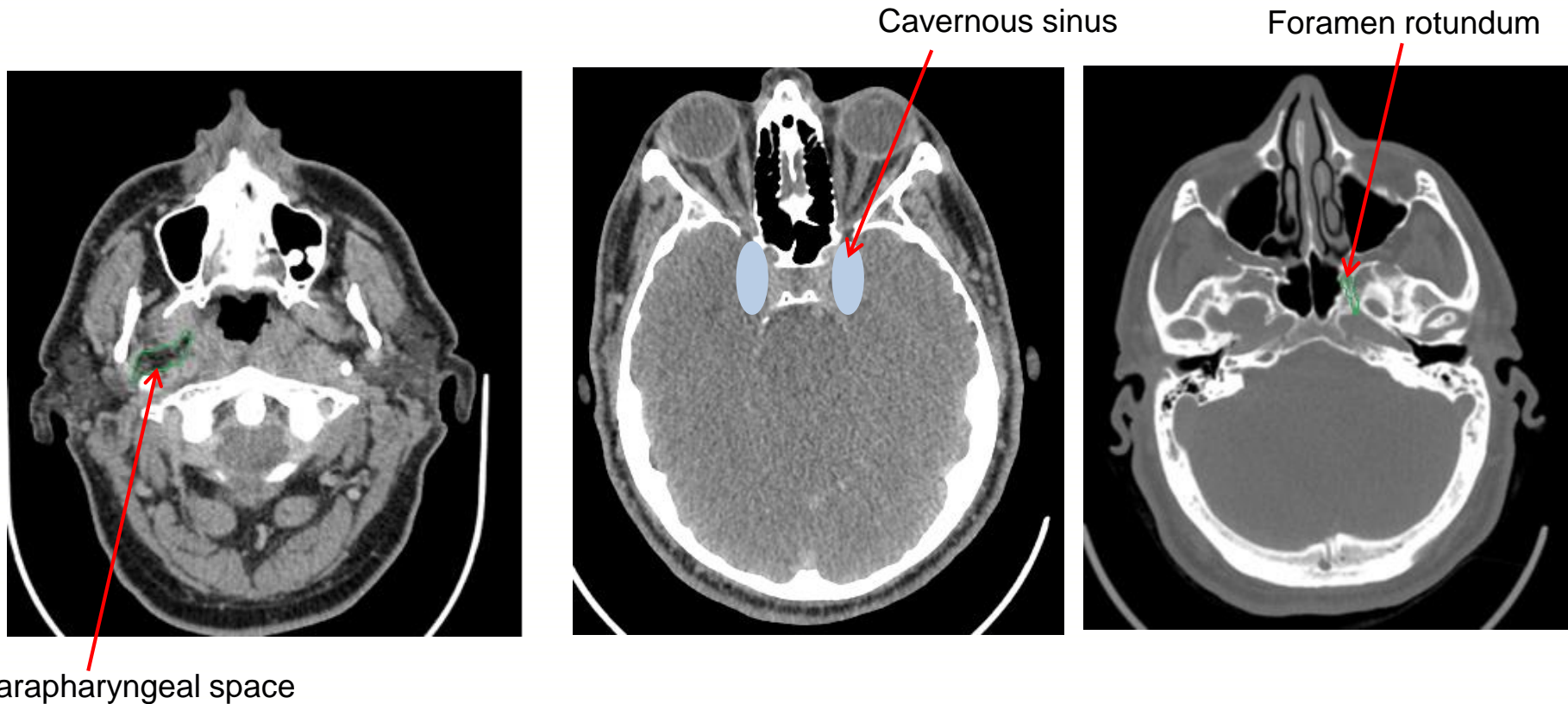
- Palpable cervical adenopathy
 - 70% cN+
 - 90% pN+ (50% bilateral)
- Nasal discharge
- Hearing loss
- Trismus
- Cranial neuropathy (CN II – XII)

Anatomy: Skull Base & Nasopharynx



*anatomic boundaries of the NPx

Anatomy: Skull Base & Nasopharynx



WHO Grading System

Nasopharyngeal Carcinoma

- **WHO I: keratinizing squamous cell carcinoma**
 - 20% prevalence
 - Associated with smoking, HPV
 - Poor LC
 - Lower risk of DM
- **WHO II: non-keratinizing, squamous cell carcinoma**
 - (A) Differentiated type
 - (B) Undifferentiated type
 - 30 – 40% prevalence
- **WHO III: undifferentiated, lympho-epithelial, or basaloid squamous cell carcinoma**
 - 40 – 50% prevalence
 - Most strongly associated with EBV
 - Better LC
 - Higher risk of DM

AJCC Staging System²

Nasopharyngeal Carcinoma

Tumor

T1: confined to NPx, OPx, and/or nasal cavity without parapharyngeal extension

T2: parapharyngeal extension

T3: bony structures of skull case of paranasal sinuses

T4: intra-cranial extension, cranial nerves, HPx, orbit, or with extension to infra-temporal fossa/masticator space

Nodes

N1: unilateral, ≤ 6 cm, above SCLV fossa; or uni/bilateral RP nodes, ≤ 6 cm

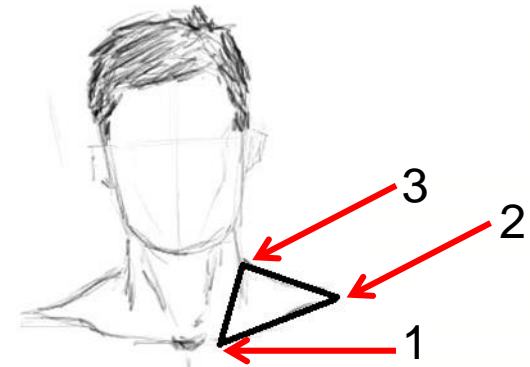
N2: bilateral, ≤ 6 cm, above SCLV fossa

N3a: > 6 cm

N3b: SCLV fossa*

Metastases

M1: any distant metastasis



*SCLV fossa is the triangular region defined by the 3 points:

- (1) Superior margin of the sternal end of clavicle
- (2) Superior margin of lateral end of clavicle
- (3) Point where neck meets shoulder

Abbreviations:

NPx: nasopharynx, OPx: oropharynx, HPx: hypopharynx, SCLV: supraclavicular

AJCC Staging System²

Nasopharyngeal Carcinoma

	T1	T2	T3	T4
N0	I	II	III	IVA
N1	II	II	III	IVA
N2	III	III	III	IVA
N3	IVB	IVB	IVB	IVB
M1	IVC	IVC	IVC	IVC

Case: Management

- cT1 cN3b cM0, stage IVB, p16- EBV- poorly differentiated nasopharyngeal carcinoma
- Consultation with Otolaryngology, Medical Oncology, Radiation Oncology
- Treatment options for T2-4 or N+ include:
 - Concurrent chemoradiation → +/- adjuvant chemo
 - Induction chemo → concurrent chemoradiation

Case: Management

- This patient received:
 - Concurrent CRT to 70 Gy in 33 fractions with weekly cisplatin 40 mg/m²
 - Adjuvant/consolidation cisplatin/5-FU

Radiation Planning

- Simulation:
 - Supine, long mask, IV contrast:
 - Co-register with MRI +/- PET-CT
- Radiation Dose/Fractionation:
 - PTV1: 69.96 Gy in 33 fractions (2.12 Gy/Fx)
 - PTV2: 59.4 Gy in 33 fractions (1.8 Gy/Fx)
 - PTV3: 54 Gy in 33 fractions (1.63 Gy/Fx)
 - Consider hyper-fractionation if dose to optic structures/brainstem would be otherwise unacceptable

Radiation Technique

- IMRT
- Proton beam radiotherapy
- Brachytherapy
 - Intracavitary boost
 - Consider for recurrent disease
 - Possible dose escalation of early/advanced primary tumors

Radiation Contouring

- PTV1 (69.96 Gy)
 - Gross disease
- PTV2 (59.4 Gy)
 - High risk subclinical disease:
 - Sphenoid sinus
 - Cavernous sinus
 - Skull base
 - Clivus
 - Posterior 1/3 of maxillary sinus
 - Posterior 1/3 of nasal cavity
 - Pterygopalatine fossae
 - Parapharyngeal space
 - Retropharyngeal space
 - Soft palate
- PTV3 (54 Gy):
 - Elective nodal coverage:
 - Retrostyloid space
 - Bilateral IB – V (can omit IB, if N0)

Contouring references:

- e-contour <http://econtour.org/cases/2>
- http://www.nyp.org/pdf/imrt_2010_talk2_lee.pdf

Dose Constraints³

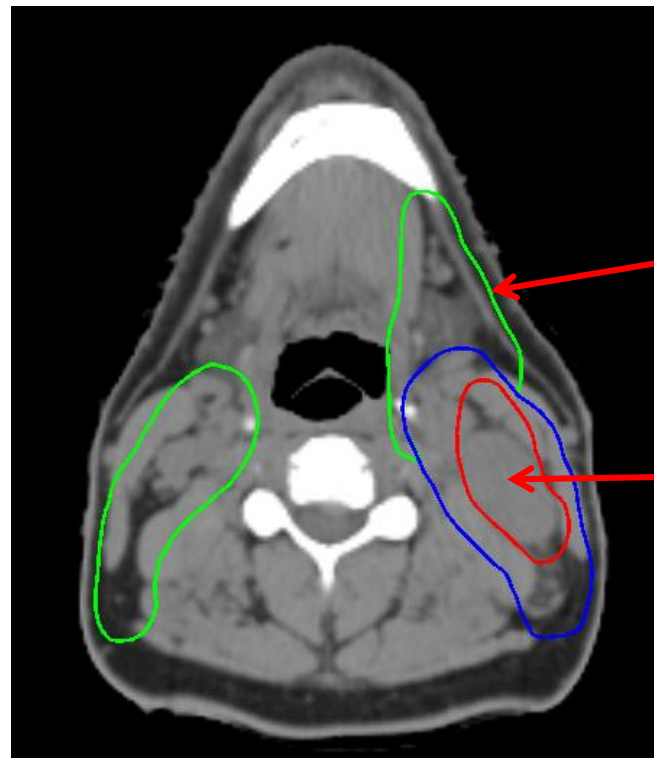
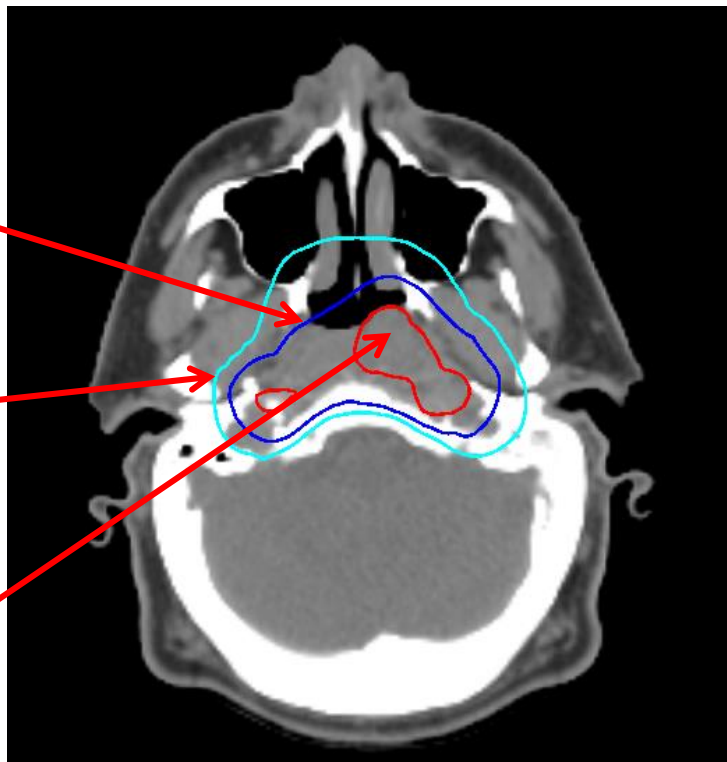
Critical normal structures (higher priority):

- Brainstem, optic nerves, chiasm Max < 54 Gy
- Spinal cord Max < 45 Gy
- Mandible/TMJ Max < 70 Gy
- Temporal lobes Max < 60 Gy

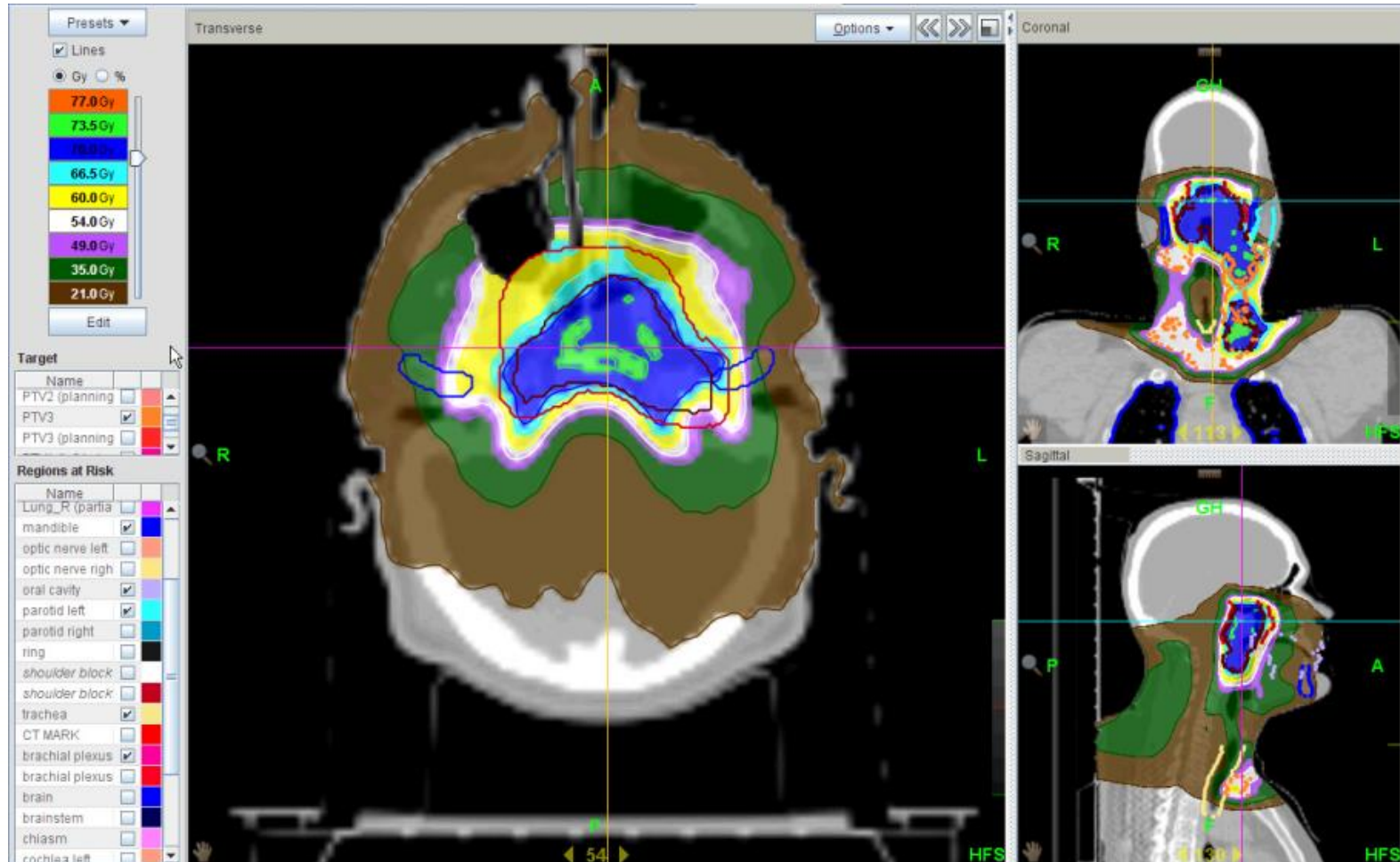
Other normal structures (lower priority):

- Parotid glands Mean \leq 26 Gy in at least one gland,
or at least 20 cc of the combined volume of
both parotid glands to receive < 20 Gy,
or at least 50% of one gland to receive < 30 Gy
- Tongue Max < 55 Gy
- Inner/middle ears (especially with concurrent Cisplatin) Mean < 50 Gy
- Eyes Mean < 35 Gy
- Glottic larynx Mean < 45 Gy
- Lens ALARA

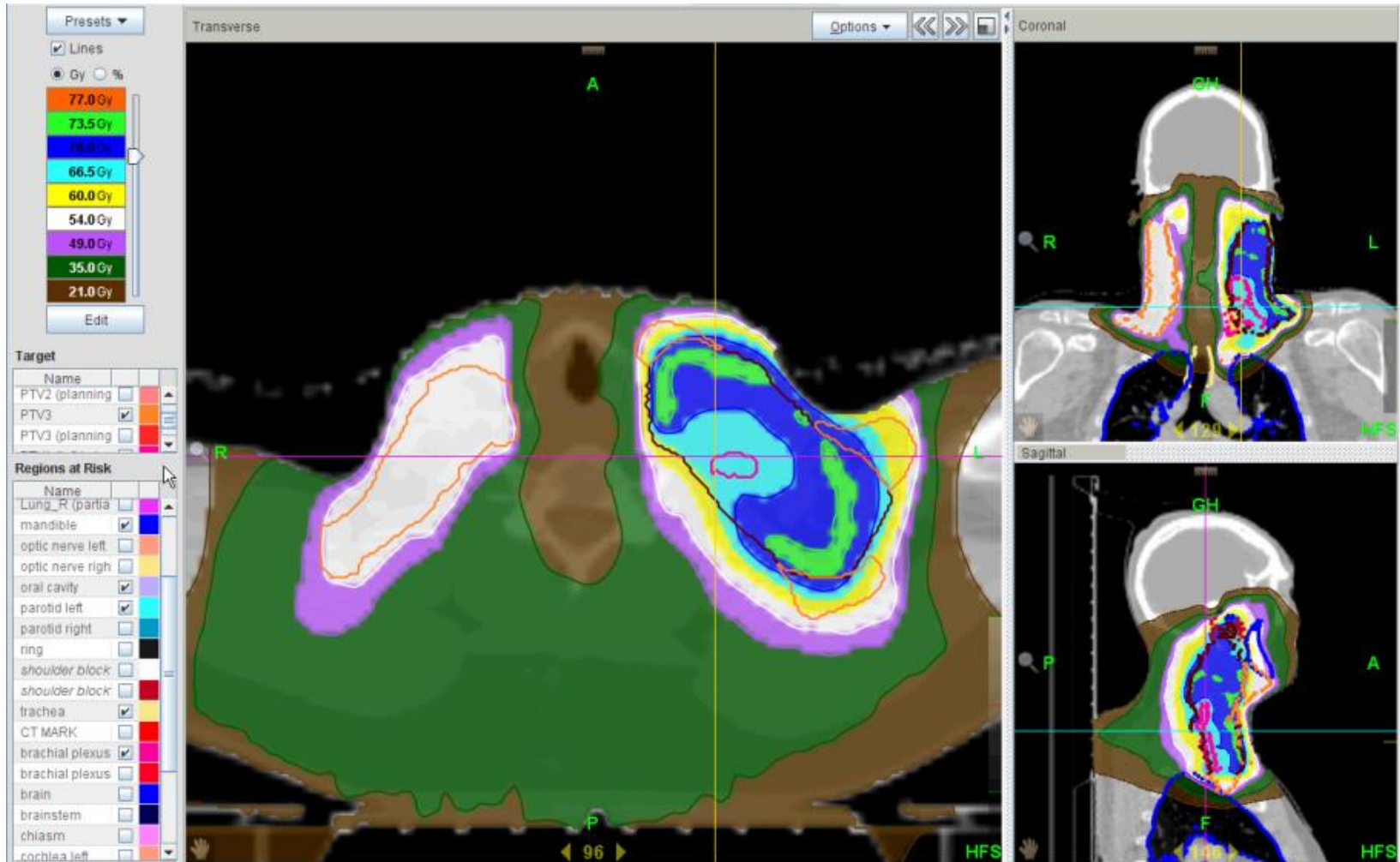
Case: Target Volumes



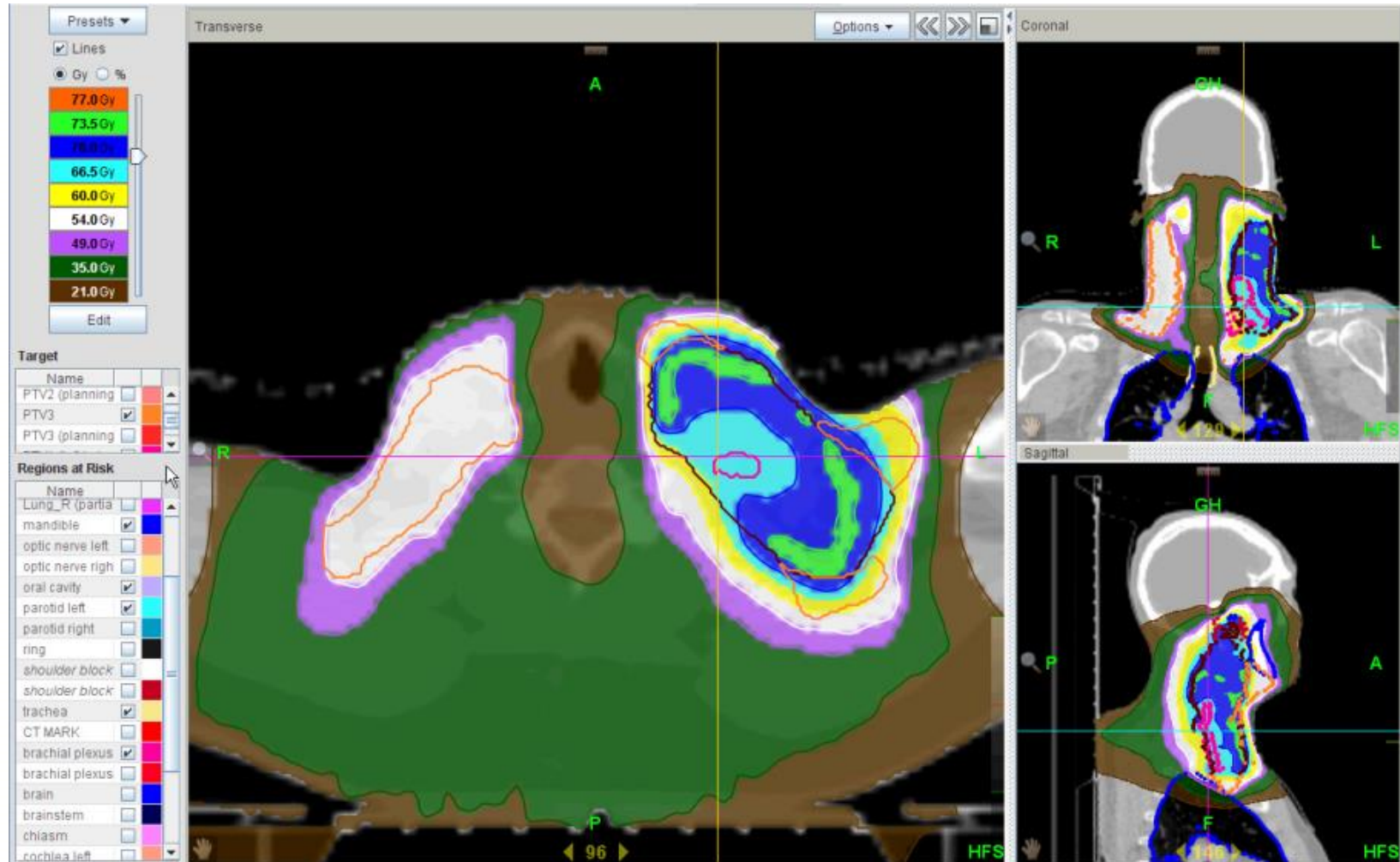
Case: Isodose Distribution



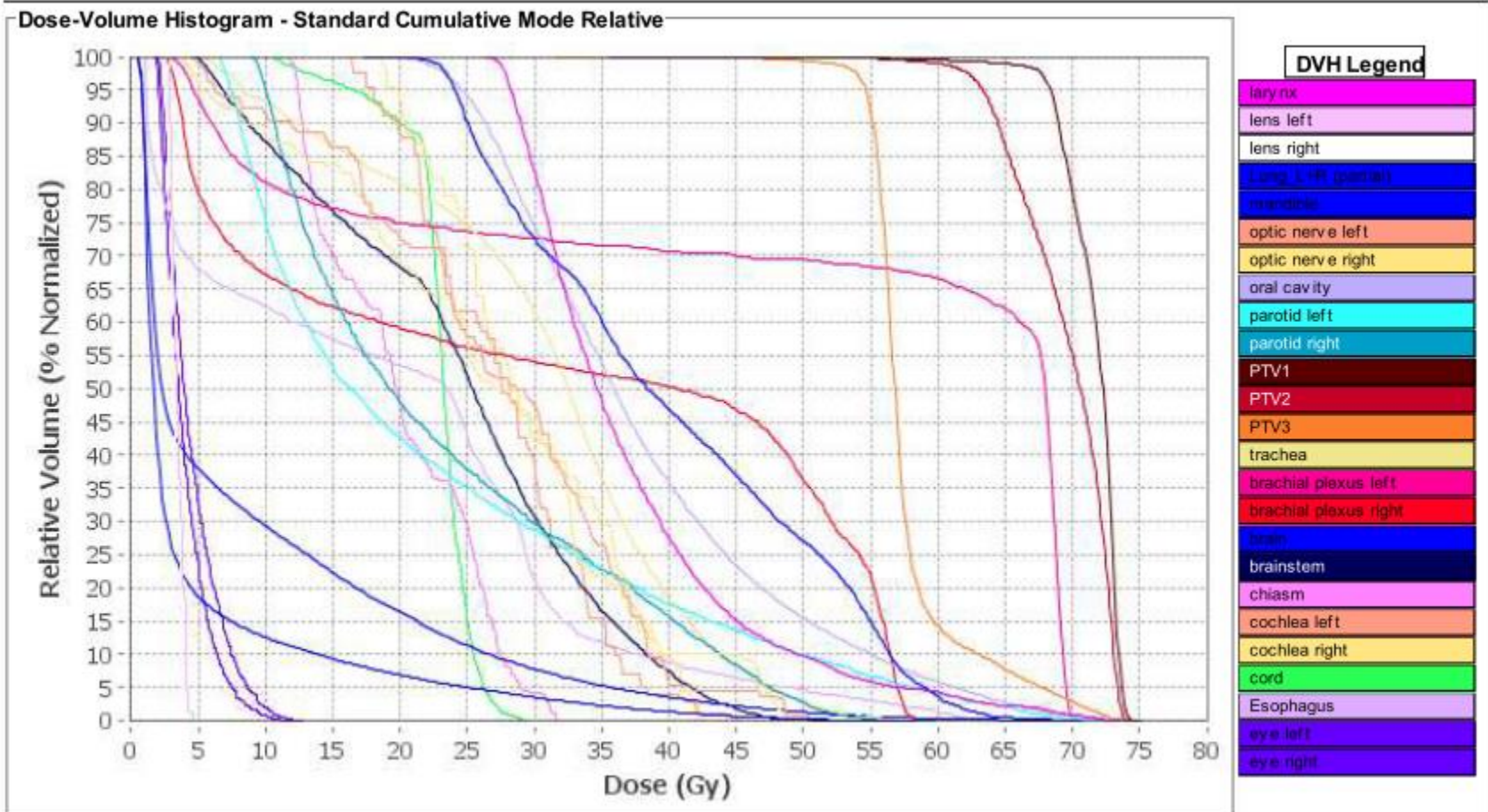
Case: Isodose Distribution



Case: Isodose Distribution



Case: Dose Volume Histogram



Treatment Algorithm

Stage	Treatment options
T1 N0	<ul style="list-style-type: none">• Definitive RT
T1 N+ T2-4 N0 T2-4 N+	<ul style="list-style-type: none">• Concurrent CRT → +/- adjuvant chemo• Induction chemo → concurrent CRT
Tx Nx M1	<ul style="list-style-type: none">• Chemotherapy (platinum-based)• Concurrent CRT

Chemotherapy

Evidence for Concurrent + Adjuvant⁴⁻⁶

	Intergroup 0099 <i>Al Sarraf et al., JCO 1998</i>	RTOG 0225 <i>Lee et al., JCO 2009</i>
Design	Randomized, phase III	Phase II
# Patients	147	68
Treatment	RT alone vs. CRT	RT +/- Chemo (for $\geq T2$ and/or N+)
Radiation	Primary tumor: 70 Gy Lymph nodes N0: 50 Gy N+ ≤ 2 cm: 66 Gy N+ > 2 cm: 70 Gy	Primary Tumor: 70 Gy at 2.12 Gy/Fx Intermediate risk: 59.4 Gy at 1.8 Gy/Fx
Chemotherapy	Concurrent: cisplatin 100 mg/m ² q3weeks Adjuvant: cisplatin 80 mg/m ² + 5-FU 100 mg/m ² /day q4weeks x 4	Concurrent: cisplatin 100 mg/m ² q3weeks Adjuvant: cisplatin 80 mg/m ² + 5-FU 100 mg/m ² /day q4weeks x 4
Outcomes	3-year PFS: 24 \rightarrow 69% ($p < .001$) 3-year OS: 46 \rightarrow 76% ($p < .001$)	2-year PFS: 72.7% 2-year OS: 80.2%
Comments	Large # of WHO type I RT alone arm performed poorly Closed early due to SS improved survival with chemo	94% WHO types II – III IMRT is feasible No excessive toxicity

- Results of Intergroup 0099 study confirmed by Chan *et al.* CRT with weekly cisplatin vs. RT alone led to 5-year OS improvement 59 \rightarrow 70%

Chemotherapy

Evidence for Induction:

- No demonstrated benefit of induction chemo
- NCCN Guidelines category 3 recommendation

Evidence for Adjuvant⁷:

- No demonstrated benefit for adjuvant chemo following definitive RT or CRT, although long term data not yet available
- NCCN Guidelines category 2B recommendation

Follow Up for Nasopharyngeal Cancer

- H&P + complete H&N physical exam +/- mirror/fiberoptic exam
 - q1-3 months for year 1
 - q2-6 months for year 2
 - q4-8 months for years 3 – 5
 - Yearly for years > 5
- Imaging for signs/symptoms
- TSH yearly (if irradiated)
- Speech/swallowing/dental/hearing evaluations
- Consider EBV-DNA monitoring

Nasopharynx Clinical Pearls

- Uncommon in the United States
- High likelihood of distant metastases
- Rarely, parotid nodal relapses can occur
- Due to the anatomic location, RT traditionally used over surgery
- Local control with RT alone of early (T1 – T2) tumors 80 – 90%
- Local control with RT alone of T3 – T4 tumors 30 – 65%
- Concurrent cisplatin-based chemo + RT has been shown to improve OS
- No evidence to support induction chemotherapy
- Little evidence to support adjuvant chemotherapy, although awaiting further results of Chen *et al.* phase 3 randomized trial
- RT technique is IMRT with simultaneous integrated boosts to 70 Gy, 59.4 Gy, and 54 Gy

References

1. National Comprehensive Cancer Network (NCCN) Clinical Practice Guidelines. Head and Neck Cancers, version 1.2015, Available at: http://www.nccn.org/professionals/physician_gls/pdf/head-and-neck.pdf, Accessed: March 28, 2016.
2. Edge SB, Byrd DR, Compton CC, et al. American Joint Committee on Cancer (AJCC) Cancer Staging Manual (Seventh Edition) New York, NY: Springer; 2010.
3. Lee N, RTOG 0225: A Phase II Study of Intensity Modulated Radiation Therapy (IMRT) +/- Chemotherapy for Nasopharyngeal Cancer, Available at: <https://www.rtog.org/ClinicalTrials/ProtocolTable/StudyDetails.aspx?study=0225>, Accessed: September 14, 2016.
4. Al-Sarraf M, LeBlanc M, Giri PG, et al. Chemoradiotherapy versus radiotherapy in patients with advanced nasopharyngeal cancer: phase III randomized Intergroup study 0099. *J Clin Oncol* 1998;16:1310-1317.
5. Lee N, Harris J, Garden AS, et al. Intensity-modulated radiation therapy with or without chemotherapy for nasopharyngeal carcinoma: radiation therapy oncology group phase II trial 0225. *J Clin Oncol* 2009;27:3684-3690.
6. Chan AT, Leung SF, Ngan RK, et al. Overall survival after concurrent cisplatin-radiotherapy compared with radiotherapy alone in locoregionally advanced nasopharyngeal carcinoma. *J Natl Cancer Inst* 2005;97:536-539.
7. Chen L, Hu CS, Chen XZ, et al. Concurrent chemoradiotherapy plus adjuvant chemotherapy versus concurrent chemoradiotherapy alone in patients with locoregionally advanced nasopharyngeal carcinoma: a phase 3 multicentre randomised controlled trial. *Lancet Oncology* 2012;13:163-171.