



ASTRO 2015
technology meets
patient care

57TH ANNUAL MEETING

MEETING DATES: OCTOBER 18-21, 2015

EXHIBIT DATES: OCTOBER 18-20, 2015

HENRY B. GONZÁLEZ CONVENTION CENTER

SAN ANTONIO


TARGETING CANCER CARE

NRG Oncology RTOG 0415: A Randomized Phase III Non-Inferiority Study Comparing 2 Fractionation Schedules in Patients with Low-Risk Prostate Cancer

W. R. Lee¹, J. J. Dignam², M. Amin³, D. Bruner⁴, D. Low⁵, G. P. Swanson⁶, B. Shah⁷, D. P. D'Souza⁸, J. M. Michalski⁹, I. S. Dayes¹⁰, S. A. Seaward¹¹, W. A. Hall¹², P. L. Nguyen¹³, T. M. Pisansky¹⁴, S. Faria¹⁵, Y. Chen¹⁶, B. F. Koontz¹, R. Paulus¹⁷, and H. M. Sandler¹⁸

¹Duke University, Durham, NC, ²University of Chicago, Department of Public Health Sciences, Chicago, IL, ³Cedars-Sinai, Los Angeles, CA, ⁴Emory University, Atlanta, GA, ⁵University of California, Los Angeles, Los Angeles, CA, ⁶Baylor Scott & White Healthcare Temple Clinic, Temple, TX, ⁷York Cancer Center, York, PA, United States, ⁸London Regional Cancer Program, London, ON, Canada, ⁹Washington University School of Medicine, St. Louis, MO, ¹⁰McMaster University, Hamilton, ON, Canada, ¹¹Kaiser Permanente Northern California, Santa Clara, CA, United States, ¹²Medical College of Wisconsin, Milwaukee, WI, ¹³Dana-Farber Cancer Institute and Brigham and Women's Hospital, Boston, MA, ¹⁴Mayo Clinic, Rochester, MN, ¹⁵McGill University Health Center, Montreal, QC, Canada, ¹⁶Wilmot Cancer Institute, University of Rochester, Rochester, NY, ¹⁷NRG Oncology, Philadelphia, PA, ¹⁸Cedars-Sinai Medical Center, Los Angeles, CA

Background

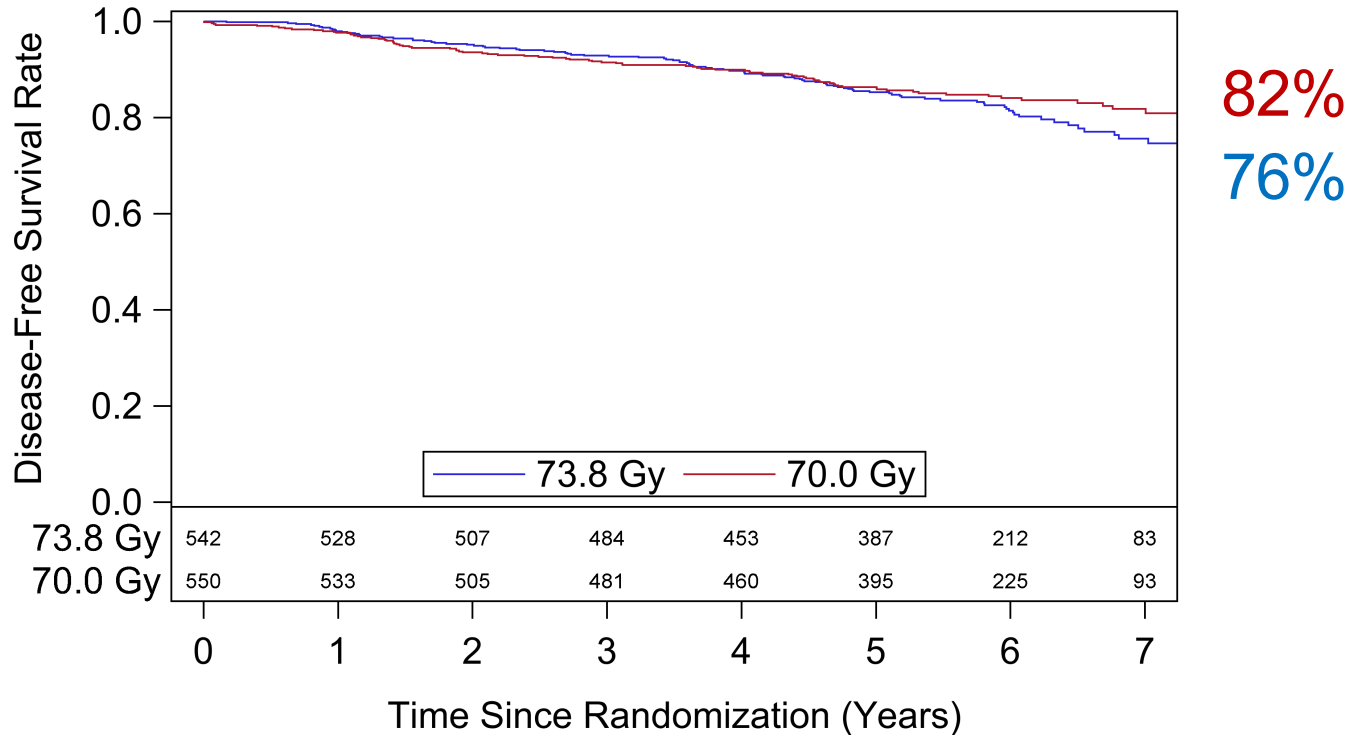
- Radiation therapy for prostate cancer usually takes 8-9 weeks to deliver
- Shorter radiation schedules have been tried and appear to work as well
- This study is a direct comparison of a shorter course and a longer course of radiation therapy in men with early stage prostate cancer

Method

<ul style="list-style-type: none">• Prostate Cancer• Not palpable• PSA <10• GS ≤6	R A N D O M I Z E	Arm 1	41 treatments over 8.2 weeks
		Arm 2	28 treatments over 5.6 weeks

Results

Disease-Free Survival



	# of Patients	Fail	Censored
3D/IMRT 73.8 Gy	542	99	443
3D/IMRT 70 Gy	550	86	464

Results

Late Adverse Effects

	73.8 Gy (n=533)	70.0 Gy (n=542)	Rel. Risk	95% CI
Any GI \geq Grade 3	14 (2.6%)	22 (4.1%)	1.55	0.80-2.99
Any GU \geq Grade 3	12 (2.3%)	19 (3.5%)	1.56	0.76-3.18

Conclusion

In men with low-risk prostate cancer, treatment delivered in 5.6 weeks works as well as treatment delivered over 8.2 weeks with a possible increase in late side effects

Acknowledgments

- Grant/Sponsor Acknowledgements
 - This project was supported by grants U10CA21661 (RTOG-Ops-Stat), U10CA37422 (CCOP), CA81647 (ATC), U10CA180868 (NRG Oncology Operations), U10CA180822 (NRG Oncology SDMC) from the National Cancer Institute (NCI). NCT 00331773
- Author affiliations
 - Duke University, Durham, NC; University of Chicago, Dept. of Public Health Sciences, Chicago, IL; Cedars-Sinai, Los Angeles, CA; Emory University, Atlanta, GA; University of California, Los Angeles, CA; Baylor Scott & White Healthcare, Temple, TX; York Cancer Center, York, PA; London Regional Cancer Program, London, ON, Canada; Washington University School of Medicine, St. Louis, MO; McMaster University, Hamilton, ON, Canada; Kaiser Permanente Northern California, Santa Clara, CA; Dana-Farber Cancer Institute, Boston, MA; Mayo Clinic, Rochester, MN; McGill University Health Center, Montreal, QC, Canada; Wilmot Cancer Institute, University of Rochester, Rochester, NY; NRG Oncology, Philadelphia, PA